



# P500

Compound 29inHg to 500PSI Pressure Gauge



## OPERATION MANUAL

**WARNING** TO REDUCE THE RISK OF INJURY OR PRODUCT DAMAGE, READ OPERATION MANUAL PRIOR TO OPERATING PRODUCT.

COPYRIGHT © 2014 - APPION INC. - ALL RIGHTS RESERVED

# Introduction

---

With the P500 Wireless Pressure Gauge, you can take measurements directly from system access ports and monitor the readings remotely, without the refrigerant loss caused by manifolds and long hoses.

With its high accuracy and repeatability, you can depend on the real-time readings on the built-in display or on a remote Smartphone or tablet for easy AC/R system service.

## Table of Contents

---

Safety .....	3
Display & Controls .....	4
Using the P500 .....	5
Bluetooth Operation .....	6
ION App.....	7
Technical Information .....	8
Regulatory .....	9
Warranty .....	11

# Safety

---

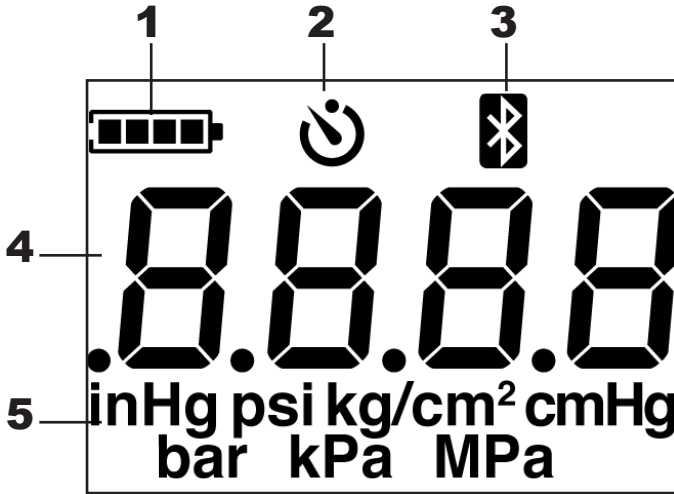
- Do not connect to systems exceeding rated pressures.
- Do not use leaky or damaged batteries.
- Use only specified batteries and cleaning agents.
- Battery operating temperatures may vary by manufacturer. The batteries supplied with this unit are for storage and operating between 32°F-104°F (0°C-40°C).
- Dispose of batteries in accordance with any applicable local laws and regulations.
- Do not dispose of the product or battery in a fire or heat above 100°C.

# Package Contents

---

- (1) Compound 29inHg to 500PSI Wireless Pressure Gauge
- (1) 1/4" Male Flare Adapter
- (1) 1/4" Female Swivel Flare Adapter
- (3) AA Batteries
- (1) Owners Manual

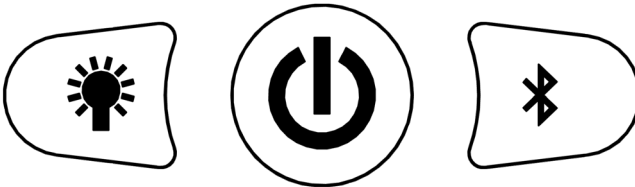
# Display



- 1- Battery Indicator
- 2- Auto Power Off
- 3- Bluetooth Status

- 4- Measurement
- 5- Units

# Controls



<b>Press</b>	Backlight	ON/OFF	
<b>Hold</b>	Units	Zero	Connect BT
<b>Both</b>	Toggle APO Timer		

1. **Press** a button for the “Press” function above.
2. **Hold** a button for 1 second for the “Hold” function.
3. Press **both** Backlight and Power to toggle Auto Power Off (APO) timer feature.

# Using the P500

---

**CAUTION:** Always wear hand and eye protection when handling connections to systems under pressure.

## **Before Connecting to System Under Pressure:**

1. Press and hold the Power/Hold (center) button to “zero” the reading to adjust for ambient atmospheric pressure.

## **Normal Usage:**

2. Make sure that all fittings are properly tightened and sealed before connecting the P500 to a system under pressure. *Never tool-tighten a knurled fitting.*
3. Press the Power button to turn on the P500. Wait for the power on self-test to complete before using the readings from the P500.
4. Press and hold the Units button for 1 second to cycle the displayed Units (optional).

**Tip:** *Connect directly to the system or to the Side Access Port on a Valve Core Removal Tool with the Female Swivel Adapter.*

# Bluetooth Operation

---

**NOTE:** Bluetooth communication requires a compatible device running the ION App. Development of the ION App is ongoing, and any information presented in this manual about the ION App may not be up to date. Visit [www.AppionTools.com](http://www.AppionTools.com) or your device's App Store for the latest ION App and additional information.

1. With the P500 powered on, press and hold the "SYNC" button for a few seconds, until the Bluetooth symbol begins flashing on the P500 screen.
2. In the ION App, "Scan" for devices, and connect as shown in the ION App. When using multiple Appion gauges, it may be easiest to connect all of the gauges first, then disconnect if needed.
3. If the connection is lost due to exceeding the Bluetooth range, or due to loss of power, repeat Step 1, then "Reconnect" the P500 through the ION App interface.

**NOTE:** *Bluetooth range may vary due to obstructions or interference. The ION App will indicate when communication is lost.*

**NOTE:** *The P500 will continue to operate normally even if Bluetooth communication is lost.*

**Tip:** *Disable Bluetooth connection on gauge and disconnect gauges from ION App to save battery life.*

# ION App

---

The ION App™ enables remote viewing for appION™ Wireless Digital Gauges.

**Superheat/Subcool:** Select the Superheat/Subcool subview. Either type in a manual entry or connect to thermal measurement. Select OK-Save. As the pressure changes, the superheat/subcool calculations will change.

**Add Refrigerants To Favorites List:** From any refrigerant list indicator, select the colored refrigerant icon and select Library. Scroll through the list and select refrigerants to add to your favorites list by highlighting the Favorite icon.

**Adjust for Elevation:** In the Navigation Menu, select Settings, and then select Location Preferences. Turn ON Account for Elevation and adjust settings accordingly.

# Technical Information

Measuring Range	29 to 0 inHg, 0 to 500 psi
Accuracy	± 0.5% (ASME B40.7 Grade 2A)
Resolution	0.5 psi
Refresh Rate	<0.5 seconds
Units	psi, in/Hg, kg/cm <sup>2</sup> , cm/Hg, bar, kPa, MPa
Power	3x AA Batteries
Battery Life	160 hours ( <i>continuous usage with radio turned off</i> )
Weight	5.6 oz (158.8 grams)
Dimensions	4.68" x 2.86" x 1.39" (119mm x 73mm x 35mm)
Auto Power Off (APO)	After 15 minutes with no change, user input, or Bluetooth activity
Warm-up	5 seconds (with self-test)
Fitting	1/8" Male NPT
Maximum Overpressure	750 psi
Operating Temperature	0° to 140° F (-17.8° to 60° C)
Wireless	Bluetooth, up to 100ft (30m) "line of sight"



# Regulatory Information

---

This device complies with Part 15 of the FCC Rules. Operation is subject to the following two conditions:

- (1) This device may not cause harmful interference, and
- (2) This device must accept any interference received, including interference that may cause undesired operation.

## **Federal Communication Commission Interference Statement**

This equipment has been tested and found to comply with the limits for a Class B digital device, pursuant to Part 15 of the FCC Rules. These limits are designed to provide reasonable protection against harmful interference in a residential installation.

This equipment generates, uses and can radiate radio frequency energy and, if not installed and used in accordance with the instructions, may cause harmful interference to radio communications. However, there is no guarantee that interference will not occur in a particular installation. If this equipment does cause harmful interference to radio or television reception, which can be determined by turning the equipment off and on, the user is encouraged to try to correct the interference by one of the following measures:

- Reorient or relocate the receiving antenna.
- Increase the separation between the equipment and receiver.
- Connect the equipment into an outlet on a circuit different from that to which the receiver is connected.
- Consult the dealer or an experienced radio/TV technician for help.

# Regulatory Information

---

## **FCC Radiation Exposure Statement**

This equipment complies with FCC RF radiation exposure limits set forth for an uncontrolled environment. This transmitter must not be co-located or operating in conjunction with any other antenna or transmitter.

## **FCC Caution**

To assure continued compliance, any changes or modifications not expressly approved by the party responsible for compliance could void the user's authority to operate this equipment.

## **Industry Canada Radio Equipment**

This device complies with Industry Canada licence-exempt RSS-210 standard. Operation is subject to the following two conditions: (1) this device may not cause interference, and (2) this device must accept any interference, including interference that may cause undesired operation of the device.

## **Équipement radio d'Industrie Canada**

Le présent appareil est conforme aux CNR d'Industrie Canada applicables aux appareils radio exempts de licence. L'exploitation est autorisée aux deux conditions suivantes :

- (1) l'appareil ne doit pas produire de brouillage, et
- (2) l'utilisateur de l'appareil doit accepter tout brouillage radioélectrique subi, même si le brouillage est susceptible d'en compromettre le fonctionnement.

# Warranty Information

Appion Inc. (hereinafter Appion) warrants that this equipment will, under normal and anticipated use, be free from defects in materials and workmanship for a period of one (1) year from the date of purchase by Purchaser from an Appion-authorized distributor.

The complete Manufacturer's Limited Warranty is available online at [www.AppionTools.com](http://www.AppionTools.com)

All warranty services must receive Appion Factory Authorization and an RGA number prior to any action. Contact your local Appion authorized distributor to obtain the RGA number and shipping instructions. To help us provide the best service, be sure to have the following information available:

- Serial number of the equipment
- Purchase date of the defective unit
- A detailed description of the problem

Appion offers technical and troubleshooting customer support for the lifetime of every product. Regardless of your warranty status, you can always contact us for assistance. Our website includes additional technical information that can help you experience the fullest potential of our products, making your job quicker and easier.

<b>Appion P500 Warranty Registration Card</b>		
Please complete this card and return it within 10 days of purchase <b>with a copy of your sales receipt.</b>		
Your Name		Your Company
Street Address		Phone Number
City	State	Zip
Email Address		Serial Number
Place of Purchase		Date of Purchase
How did you learn about our products? (Please only check one) <ul style="list-style-type: none"> <li><input type="checkbox"/> Wholesaler _____</li> <li><input type="checkbox"/> Recommended By: _____</li> <li><input type="checkbox"/> Magazine</li> <li><input type="checkbox"/> Mailing</li> <li><input type="checkbox"/> Newspaper Ad</li> <li><input type="checkbox"/> Internet</li> </ul>		Please select your primary line of business. (Check all that apply) <ul style="list-style-type: none"> <li><input type="checkbox"/> Automotive</li> <li><input type="checkbox"/> Commercial</li> <li><input type="checkbox"/> Residential</li> <li><input type="checkbox"/> Service</li> <li><input type="checkbox"/> Installation</li> </ul>
Register by <b>Mail</b> : Appion Inc. 2800 South Tejon Street Englewood, CO 80110 USA		What features most interested you? (Check all that apply) <ul style="list-style-type: none"> <li><input type="checkbox"/> High Production</li> <li><input type="checkbox"/> Low Cost</li> <li><input type="checkbox"/> Low Maintenance</li> <li><input type="checkbox"/> Portability</li> <li><input type="checkbox"/> Ease of Use</li> <li><input type="checkbox"/> Other: _____</li> </ul>
Register by <b>Email or Fax</b> : 1. Scan this page AND a copy of your sales receipt. 2. Email to: <a href="mailto:Sales@AppionTools.com">Sales@AppionTools.com</a> or Fax this page and your sales receipt to: 1-303-937-1599		

# **Appion Inc.**

2800 South Tejon St.  
Englewood, CO 80110 USA

Tel: 1-303-937-1580

Fax: 1-303-937-1599

[www.AppionTools.com](http://www.AppionTools.com)

[Sales@AppionTools.com](mailto:Sales@AppionTools.com)

[Support@AppionTools.com](mailto:Support@AppionTools.com)