

Vert-I-Pak®

SINGLE PACKAGE VERTICAL AIR CONDITIONERS



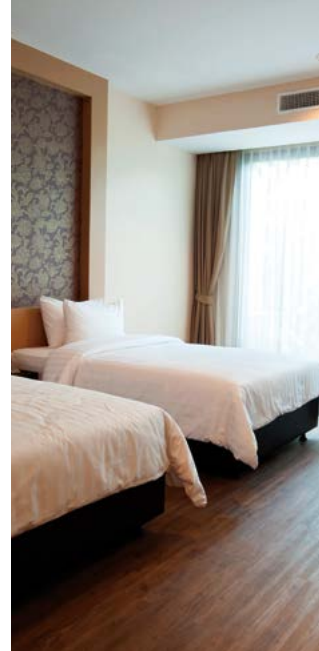
FRIEDRICH

1883

THE EXPERTS IN ROOM AIR CONDITIONING

Vert-I-Pak®

A Better Solution for Hospitality and Multi-Family Suites



Vert-I-Pak® is a quiet, energy efficient option for extended stay properties, suites, assisted living, student housing and commercial spaces.

Ducted and closet-mounted, Vert-I-Pak eliminates the need for multiple through the wall units. The packaged Vert-I-Pak unit is installed out of sight, so guests enjoy a more attractive, more homelike appearance.



Electric Heat

COOLING
9000-23000 Btu
Up to 10.7 EER

ELECTRIC HEAT
8500-34130 Btu

Heat Pump

COOLING
9000-23000 Btu
Up to 10.5 EER

REVERSE HEATING
8500 -20000 Btu
All 3.0 COP

**AUXILIARY
ELECTRIC HEATING**
8500-34130 Btu



Better Aesthetics

Outdoors

Packaged unit eliminates the clutter of outdoor condensing units and the sleek architectural grille is available in custom colors to match the building's exterior.

Indoors

The unit is installed out of sight, so your guests will only see a wall thermostat.



VERT-I-PAK® IS A SUPERIOR PRODUCT

What you'll find on Friedrich Vert-I-Pak®

1. Floating chassis design slides into a wall plenum and is held firmly in place by a sealing gasket, reducing noise from vibration transfer.
2. ½ inch foil-backed insulation added on the inside of the chassis to reduce sound transmission into the guest room.
3. Efficiencies above industry standards with EERs up to 10.7.
4. Condensate removal system uses slinger ring technology to cool the coil and increase efficiency.
5. Dynamically balanced blower with large, vibration-absorbing motor mounts for smooth and quiet operation.
6. Patented telescoping plenums (accessory) easily adapt to more installations.
7. 5 year limited warranty* (on the sealed system) includes labor.

* See warranty documentation for details.

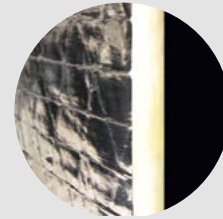
What you'll find on many competitor's products

1. Chassis is screwed into the wall plenum. Metal-on-metal contact transfers vibration, increasing operating noise under typical conditions. Noise is transferred through the walls and into the room.
2. No insulation on the unit to reduce noise transmission into the guest room.
3. Hard plastic feet on the unit base which are less durable and transfer harsh vibration noise.
4. Different plenums needed based on varying wall depths.
5. No labor warranty.

Friedrich engineered for quieter performance

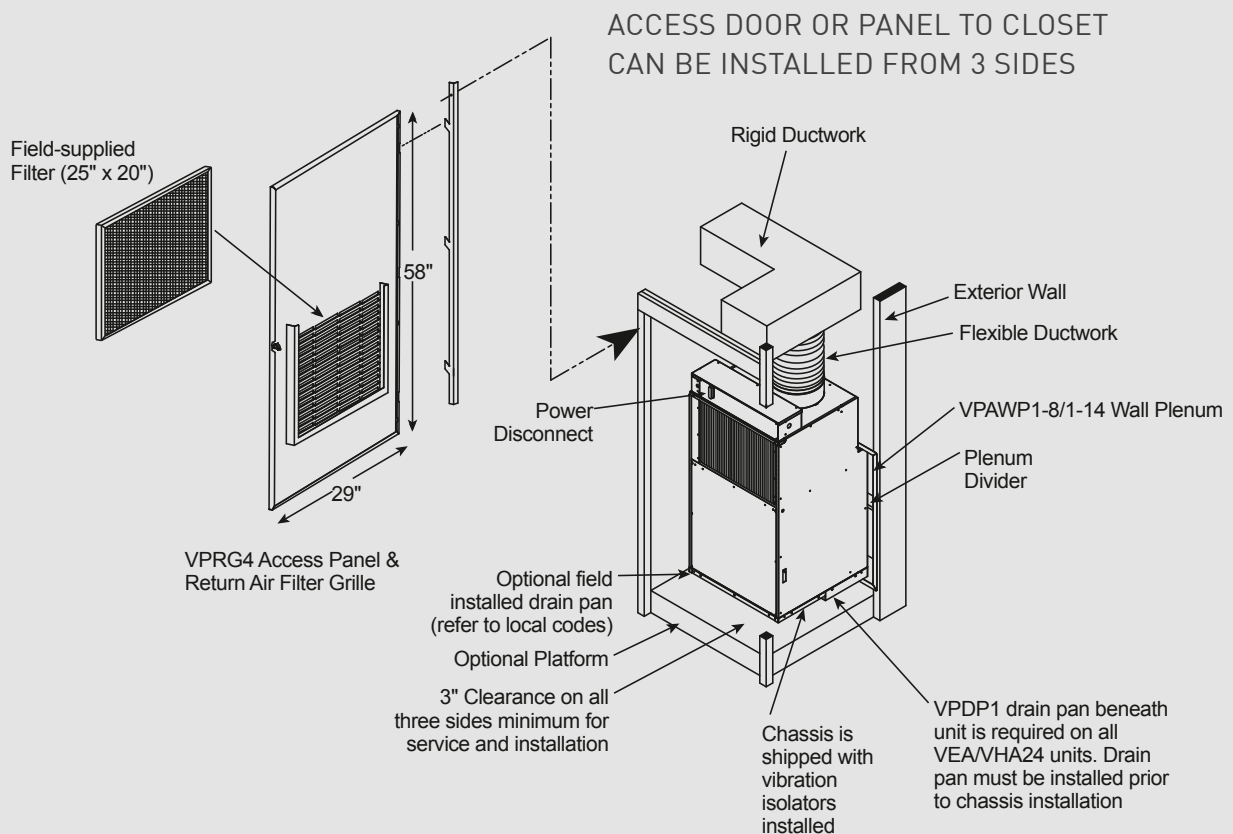
Friedrich's 'Free Floating' chassis design and superior insulation help to eliminate vibration noise

The chassis slides into the wall plenum and a gasket firmly seals the chassis to the patented telescoping plenum. This eliminates vibration noises that are transmitted into the room in competitor's metal-on-metal fixed installations. Extra thick, vibration-absorbing rubber grommets mounted on durable base that is engineered for structural and acoustic integrity.



Foil-backed, 1/2" insulation blanket inside the cabinet reduces sound transmitted into the guest room

TYPICAL VERT-I-PAK® INSTALLATION



VERT-I-PAK® ADVANTAGES

A better heating and cooling option inside and out

- **Eliminates the clutter** of outdoor condensing units and the need for vandalism barriers.
- Completely **self-contained**
- **No refrigerant lines** running from floor to floor
- **Fast, easy replacement** keeps spaces livable

Improved guest comfort

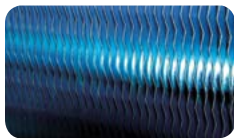
- **Individually** controlled
- Heat and cool
- **Duct air specifically where it's needed**, not just on the outside wall
- 2-speed fan with **constant fan option** on Friedrich RT6 and WRT1 thermostats

FEATURES

Reliable and durable

- PSC **permanently lubricated motor** for low maintenance and maximum efficiency
- Engineered drain pan **won't rust**, eliminating the risk of unsightly rust stains from condensation on the building exterior
- Painted, **18-gauge galvanized steel** cabinet resists corrosion
- Standard safety power disconnect
- Electronic control panel on unit for **easy diagnostics and servicing**
- **100% run tested** prior to shipment- Every unit is tested in every operating mode before it ships for optimal performance and reliability


DIAMONBLUE
Advanced Corrosion Protection®



Protects the outdoor coil against deterioration and extends the life of the unit especially in harsh coastal environments.

A better choice than whole building solutions

- **Lower installed cost**
- **Independent metering** (no need to prorate for multi tenant applications)
- **Individual temperature set point** (one unit can heat and others can cool)
- **Less risk**, with a whole building system, spaces may become uninhabitable until the system is repaired or replaced
- Vert-I-Pak can be **easily accessed** for maintenance or replacement

Easy installation

- Can be installed from any interior side (front, right or left)
- **Ductable** to multiple rooms
- **Compact and lightweight**, weighs as little as 114 lbs.
- Installation does not require an HVAC technician
- **Prewired**, charged and piped
- All units are **ready to install** with only electrical hook up needed to be up and running
- 10" crimped and beaded duct-collar ready to attach flex duct
- Patented **telescoping wall plenums** adjust to fit varying exterior wall thicknesses
- Primary condensate removal system provided through 3/4" pipe fittings for more placement options
- Secondary overflow from primary drain*
- **Central desk control** ready
- 24-volt remote wireless or wired thermostat ready
- All units are shipped (on pallet) with return air filter

Warranty and Support

- **Industry leading warranty** features 1 year full warranty on parts and labor and 5 year limited warranty.
- **Nationwide service network and U.S. based Friedrich expert technical team** ensures you get fast, knowledgeable service.



Energy management thermostats available

- **Wired and wireless** thermostats
- Integrated **motion and thermal** occupancy sensor
- Auto changeover
- 5 distinct energy presets
- Comprehensive remote management capability**



* 24000 Btu model uses secondary gravity-fed drain. ** Energy management capability requires purchase of additional hardware and service fee

Save big on energy without compromising guest comfort

FriedrichLink® Thermostats, the Energy Management Solution for Friedrich Vert-I-Pak®



Real Time Motion and Thermal Occupancy Sensor

Integrated Occupancy Sensor uses a combination of **motion and thermal sensing technologies** for accurate occupancy detection at all times - no need to install additional devices such as door switches or sensors.

Wired or Wireless Installation

Wired or wireless connectivity with extensive configuration options deliver full compatibility and easy integration with virtually any packaged HVAC system.

5 Energy Savings Presets

5 distinct energy saving modes make it easy to choose the optimal energy saving settings for any property.

Remote Management*

Web-based remote management provides expansive solutions for remote monitoring and configuration from any computer connected to the internet.

Built-in Wireless Networking enables remote management without using or interfering with property's existing wireless infrastructure. True mesh networking eliminates the need for additional networking equipment such as signal repeaters or multiple data collection boxes.

*Requires an optional "Online Connection Kit" and a one-time license fee. Optional Humidity Control Feature available through Remote Management. See accessories page 6.

Friedrich's **EMRT1** and **EMWRT1** thermostats use real-time motion and thermal occupancy detection to save energy.

When the room is unoccupied, the thermostat automatically adjusts the temperature to eliminate unnecessary heating and cooling.



Monitor room status and see the operation, occupancy and energy efficiency status of each room.

Advanced Energy Saving Features

Fully configurable energy saving modes maximize energy savings without compromising guest comfort.

Temperature setback automatically adjusts the temperature when the room is unoccupied in order to save energy.

Temperature recovery calculates the setback temperature so that the desired temperature can be restored within specified time.

Setback optimization continuously monitors temperature recovery rate in the room and adjusts setback temperature to maximize energy savings.

Setback limits allow maximum and minimum room temperature to be set when the room is unoccupied.

Set point limits prevent guests from setting room temperature to extreme, energy-wasting levels.

Room status displays operation, occupancy and energy efficiency status of each room.

Room detail displays temperature and occupancy changes in a room.

Energy reports monitor energy use and can even evaluate the performance of energy saving features.

Intuitive interface makes it easy to apply different settings to different rooms.

User management allows configuration of custom access permissions and alert notification settings for different users.

Built-in diagnostic tools automatically send email alert notifications to hotel staff.

FriedrichLink®

FriedrichLink® For Lodging

OPTIONAL ACCESSORIES

ARCHITECTURAL LOUVER

VPAL2 and VPSC2

Extruded aluminum grille that attaches to the outdoor section of the wall plenum. Takes in fresh air and returns condensed air. VPSC2 can be ordered in custom colors.

DIMENSIONS: 25 9/16" W x 31 1/16" H



VPAL2



VPAWP1-8

WALL PLENUM

VPAWP1-8, VPAWP1-14

Two-part sleeve that telescopes in and out; sits inside the exterior wall penetration.

VPAWP1-8 telescopes from 5 1/2"–8"

VPAWP1-14 telescopes from 8"–14"

DIMENSIONS: 24 1/8" W x 30 3/8" H

CUTOUT DIMENSIONS: 24 5/8" W x 30 7/8" H

RETURN AIR GRILLE/ ACCESS PANEL

VPRG4 / VPRG4R

Hinged panel allows access to unit and return air filter.

A field-supplied filter (25" x 20") should be mounted on the inside grille. Panel can be mounted with return air openings high or low on the door for optimum sound attenuation.

DIMENSIONS: 29" W x 58" H

CUTOUT DIMENSIONS: 27" W x 55 3/4" H



VPRG4/
VPRG4R

FIRST COMPANY SLEEVE ADAPTER

VPASA1

Single piece, welded adapter allows retrofit into existing First Company® SPXR-series single package vertical unit wall sleeve and louver. Easily connects to Friedrich chassis. Only compatible with Friedrich's smaller sized VPAK 9k, 12k and 18k units.



VPASA1

SINGLE STAGE THERMOSTATS

RT6

Wired, single stage, wall-mounted digital thermostat has two fan speeds and backlight. Controls Friedrich VERT-I-PAK.

WRT1

Wireless, single stage, wall-mounted digital thermostat has two fan speeds and backlight. Controls Friedrich VERT-I-PAK.



RT6



WRT1

ENERGY MANAGEMENT THERMOSTATS

EMRT1

Wired thermostat has occupancy sensor.

EMWRT1

Wireless thermostat has occupancy sensor.

EMOCT

Online connection kit.

EMRAF

Remote access fee.

EMRHCF

Remote humidity control fee.



EMRT1, EMWRT1

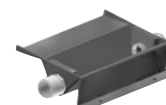


DRAIN PAN

VPDP1

For VEA/VHA24 models and 10.0 EER VHA18K models. May be installed prior to chassis for easy installation/removal.

VPDP1



SPECIFICATIONS

MODEL	VEA09K	VEA12K	VEA18K	VEA24K	VHA09K	VHA09R	VHA12K	VHA12R	VHA18K	VHA18R	VHA24K	VHA24R
COOLING DATA												
COOLING BTU	9000/9000	12000/12000	17000/16500	23000/22700	9000/9000	9000	12000/12000	12000	17000/16800	16800	23000/22800	22500
POWER (W)	840/840	1145/1120	1889/1833	2421/2389	855/855	855	1165/1165	1190	1886/1846	1846	2527/2505	2475
EER	10.7/10.7	10.5/10.7	9.0/9.0	9.5/9.5	10.5/10.5	10.5	10.3/10.3	10.1	9.1/9.1	9.1	9.1/9.1	9.1
SENSIBLE HEAT RATIO	0.77	0.74	0.70	0.70	0.77	0.77	0.75	0.77	0.70	0.70	0.70	0.70
HEATER SIZE (kW)	2.5/3.4/5.0	2.5/3.4/5.0	2.5/3.4/5.0	2.5/3.4/5.0/7.5/10.0	2.5/3.4/5.0	2.5/3.4/5.0	2.5/3.4/5.0	2.5/3.4/5.0	2.5/3.4/5.0	2.5/3.4/5.0	2.5/3.4/5.0/7.5/10.0	2.5/3.4/5.0/7.5/10.0
HEAT PUMP DATA												
HEATING BTU	–	–	–	–	8480/8400	8650	11500/11200	11000	16000/15000	15900	20000/20000	20000
COP @ 47F	–	–	–	–	3.0/3.1	3.0	3.0/3.1	3.0	3.0/3.0	3.0	3.0/3.0	3.0
HEATING POWER (W)	–	–	–	–	830/795	845	1125/1060	1075	1560/1540	1550	1953/1953	1950
HEATING CURRENT (A)	–	–	–	–	3.7/3.9	3.2	4.8/5.0	4.1	7.5/8.2	6.5	8.5/9.4	8.1
ELECTRICAL DATA												
VOLTAGE (1 PHASE, 60 HZ)	230/208	230/208	230/208	230/208	230/208	265	230/208	265	230/208	265	230/208	265
VOLT RANGE	253-197	253-197	253-197	253-197	253-197	292/239	253-197	292/239	253-197	292-239	253-197	292-239
COOLING CURRENT (A)	3.9/4.2	5.1/5.4	8.1/8.6	10.0/10.4	3.8/3.9	3.8	5.3/5.6	4.7	8.2/8.6	6.9	10.9/10.6	9.7
AMPS L.R	21.0	29.5	42.0	46.0	21.0	21.0	30.0	30.0	42.0	42.0	46.0	46.0
AMPS F.L.	3.5	4.7	7.8	9.5	3.5	3.5	4.8	4.8	7.8	7.8	9.5	9.5
INDOOR MOTOR (HP)	1/4	1/4	1/4	1/4	1/4	1/4	1/4	1/4	1/4	1/5-1/6-1/7	1/4	1/4
INDOOR MOTOR (A)	1.2	1.2	1.2	1.9	1.2	1.2	1.2	1.2	1.2	1.2	1.9	1.8
OUTDOOR MOTOR (HP)	–	–	–	1/4	–	–	–	–	–	–	1/4	1/4
OUTDOOR MOTOR (A)	–	–	–	0.85	–	–	–	–	–	–	0.85	0.9
PHYSICAL												
DIMENSIONS (W X D X H)	23" x 23" x 32"	23" x 23" x 32"	23" x 23" x 32"	23" x 23" x 47"	23" x 23" x 32"	23 x 23 x 32	23" x 23" x 32"	23 x 23 x 32	23" x 23" x 32"	23" x 23" x 32"	23" x 23" x 47"	23" x 23" x 47"
NET WEIGHT (LBS)	114	124	144	167	114	114	125	124	144	165	167	187
SHIPPING WEIGHT (LBS)	125	135	155	220	125	125	136	135	155	176	220	240
TEST SETTING	LOW	LOW	HIGH	LOW	LOW	LOW	LOW	LOW	HIGH	HIGH	LOW	LOW
R410A CHARGE (OZ)	41.5	45	48.1	65	38	39	39.5	37	48	48	65	65
AIRFLOW DATA												
INDOOR CFM	LOW	HIGH	LOW	HIGH	LOW	HIGH	LOW	HIGH	LOW	HIGH	LOW	HIGH
.10" ESP	405	450	420	450	400	480	610	700	420	450	420	450
.15" ESP	375	420	405	425	375	465	585	670	405	425	405	425
.20" ESP	345	385	385	400	350	450	560	640	385	400	385	400
.25" ESP	325	365	355	375	330	390	535	610	355	375	355	375
.30" ESP	305	340	320	350	310	330	510	580	320	350	320	350
VENT CFM	60	60	60	60	60	60	60	60	60	60	60	60

NOTES:

New higher efficiency (10.0 EER) VHA18K, VHA18R units available early 2017.

Cooling Standards: 95°F DB/75°F WB OUTDOOR, 80°F DB/67°F WB INDOOR

Heating Standards: 47°F DB/43°F WB OUTDOOR, 70°F DB/60°F WB INDOOR

Normal Value Wet Coil @ .1" ESP

Rated CFM at Low Speed: VEA09/VHA09....325 VEA12/VHA12....390

VEA18/VHA18....400 VEA24/VHA24....610

Due to continuing research in new energy-saving technology, specifications are subject to change without notice.



Friedrich Air Conditioning Co. | 10001 Reunion Place, Suite 500 | San Antonio, TX 78216 | 877.599.5665 | www.friedrich.com