

WASTE WATER DRAIN LAUNDRY PUMPS LTP/LTS SERIES

DATA SHEET

- 💧 Suds proof reservoir
- 💧 No main stack vent connection required*
- 💧 Sealed switch assembly

LTP medium capacity reservoir pump.

Designed for laundry and wet bar applications. Primarily used where the sink or appliance is installed below the plumbing drain.

LTS medium temp, high capacity reservoir pump.

Heavy duty pump designed for moving large quantities of water. Used in commercial and industrial air-conditioning system, large refrigeration units, and multiple unit installations to tie several drains into one disposal pump.

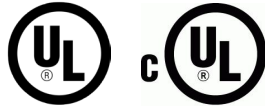
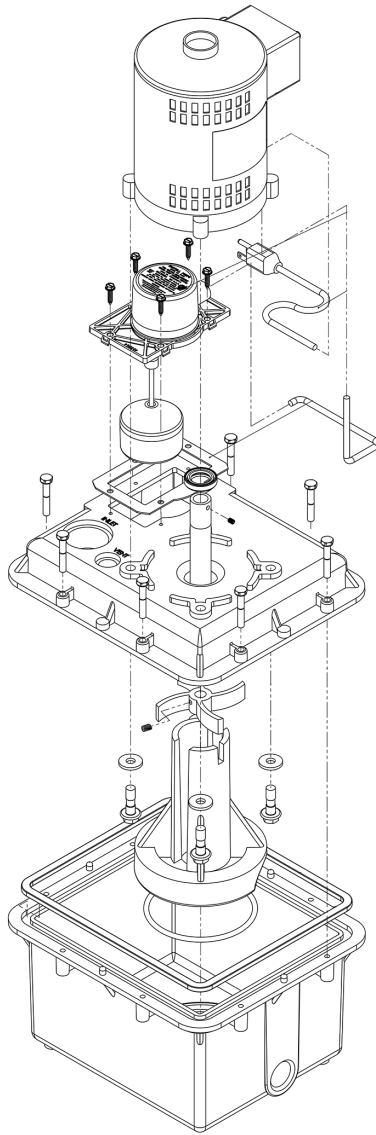
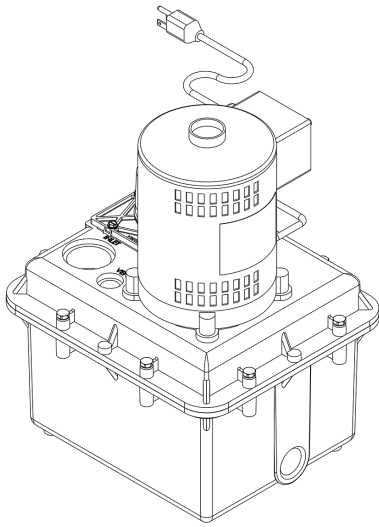
FEATURES:

- 💧 Structural foam polypropylene reservoir
- 💧 8 foot cord and plug
- 💧 Fits inside 24" base cabinets
- 💧 Allows sink installation without breaking concrete
- 💧 Unitized construction
- 💧 Fits under utility sinks
- 💧 Simple installation, saves time
- 💧 Max Temperature: 130°F (54°C)



Model	Part No.	Voltage	HP @ RPM	Performance			Max. Lift	Dimensions			
								Width	Length	Height	Weight
LTP-1	801284	115V 5A 60 Hz	1/4 @ 1725	Lift/Feet	6'	10'	12'	10"	12"	17"	24 lbs
				Gallons/Hr	2370	1500					
				Lift/Meters	1.83m	3.05m	3.66m	25.4cm	30.48cm	43.18cm	10.89 kg
				Liters/hr	8971	5680					
LTS-1	801285	115V 5.6A 60 Hz	1/3 @ 1725	Lift/Feet	6'	10'	16.5'	10"	12"	17"	24 lbs
				Gallons/Hr	2628	2100					
				Lift/Meters	1.83m	3.05m	5.03m	25.4cm	30.48cm	43.18cm	10.89 kg
				Liters/Hr	9948	7950					

*N.S.P.C. Section 11.7.9. Check local codes



**1
YEAR
WARRANTY**

DATA SHEET

DIRECT MOUNT AUTOMATIC SINK DRAIN PUMP LTA-1 (802210)

PERFORMANCE CURVE

