

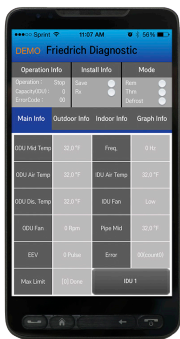
# Wireless Diagnostic Tool for Friedrich Precision Inverter™ Ductless Split Systems



DWTST

## Monitor and diagnosis wall-mounted ductless systems\* for quick service responses

- 1 Download Friedrich Diagnostic app from Google Play or App Store
- 2 Connect DWTST module to outdoor unit
- 3 Begin monitoring unit



Technicians can observe various data points, such as:

- Thermistor temps
- DC link voltage
- Fan RPM
- EEV pulse
- Error codes

Error Code Description

Error Code	Description
1	Indoor Sensor (Air) open/short
2	Indoor Sensor (Entry Pipe) open/short
4	Float Switch Error
5	Communication Failure (Indoor Unit . Outdoor Unit)
6	Indoor Sensor (Exit Pipe) open/short
9	EEPROM ERROR (Indoor Unit)
10	Indoor Unit Fan Lock (Operation Failure)
12	Indoor Sensor (Middle Pipe) open/short
21	DC Peak (IPM Fault)
22	CT2 (Max CT)
23	DC Link Low Volt
25	AC Low/High Volt
26	DC Comp Position Error, Locking
27	PSC Fault
29	Comp Phase Over-Current
32	Inverter Compressor D-Pipe Overheat
37	Exceed the Compression Ration Limit
40	CT Sensor Error
41	D-Pipe Sensor INV (Open / Short)
44	Outdoor Air Sensor (Open / Short)
45	Cond. Middle Pipe Sensor (Open / Short)
48	Cond. Out Pipe Sensor (Open / Short)
53	Communication Error (IN-OUT)
60	EEPROM Check Sum
62	Heat Sink Sensor Temp. High
63	Cond. Pipe Low
65	Heat Sink Sensor Temp. High
67	BLDC Motor Fan Lock
72	Detect 4 Way Valve Transfer Failure
73	PFC SW F

### IMPORTANT

\*Friedrich DWTST works only with Friedrich Precision Inverter™ wall-mounted ductless split systems. Applications are subject to change without notice. Not for use with other Friedrich models or other brands of products.



# FRIEDRICH

www.friedrich.com