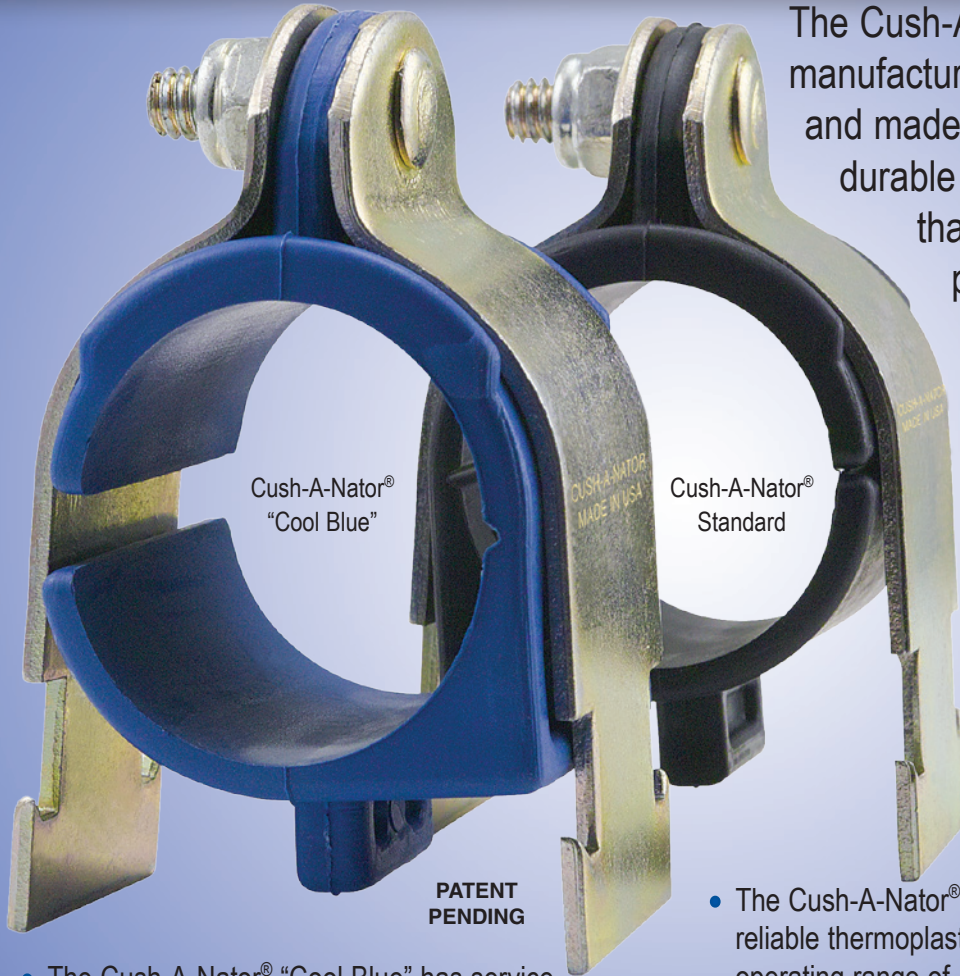




# ZSI-Foster



Cush-A-Nator®  
"Cool Blue"

Cush-A-Nator®  
Standard

PATENT  
PENDING

- The Cush-A-Nator® "Cool Blue" has service temperatures of -65°F to 340°F (-53°C to 170°C)

The Cush-A-Nator® cushion is manufactured in the United States and made from a new incredibly durable thermoplastic rubber that resists high heat and provides longer life against vibration fatigue. The Cush-A-Nator® is made from a proprietary thermoplastic vulcanized material cross-linked with high performance rubber and thermoplastic elastomers, which produces the highest operating temperature range in the industry.

- The Cush-A-Nator® standard is made from our reliable thermoplastic elastomer that has an operating range of -50°F to 275°F (-45°C to 135°C), but provides the features of the new design

## CUSH-A-NATOR®

A NEW BREAKTHROUGH IN CUSHIONED CLAMPING  
DEVELOPED BY INDUSTRY LEADER ZSI

[www.zsi-foster.com](http://www.zsi-foster.com)



## Cush-A-Nator®

The Cush-A-Nator® cushion is manufactured in the United States and made from a new incredibly durable thermoplastic rubber that resists high heat and provides longer life against vibration fatigue. The Cush-A-Nator® is made from a proprietary thermoplastic vulcanized material cross-linked with high performance rubber and thermoplastic elastomers, which produces the highest operating temperature range in the industry.

| Cush-A-Nator® "Cool Blue"<br>[extended temperature -65°F to 340°F] |        |        |                |
|--|--------|--------|----------------|
| Part No.   |        |        | O.D. Tube Size |
| Steel  | SS304  | SS316  |                |
| HT04   | HT04SS | HT04S6 | 1/4" (0.25)    |
| HT06   | HT06SS | HT06S6 | 3/8" (0.37)    |
| HT08   | HT08SS | HT08S6 | 1/2" (0.50)    |
| HT10   | HT10SS | HT10S6 | 5/8" (0.62)    |
| HT12   | HT12SS | HT12S6 | 3/4" (0.75)    |
| HT14   | HT14SS | HT14S6 | 7/8" (0.87)    |
| HT16   | HT16SS | HT16S6 | 1" (1.00)      |
| HT18   | HT18SS | HT18S6 | 1 1/8" (1.12)  |
| HT20   | HT20SS | HT20S6 | 1 1/4" (1.25)  |
| HT22   | HT22SS | HT22S6 | 1 3/8" (1.37)  |
| HT24   | HT24SS | HT24S6 | 1 1/2" (1.50)  |
| HT26   | HT26SS | HT26S6 | 1 5/8" (1.62)  |
| HT28   | HT28SS | HT28S6 | 1 3/4" (1.75)  |
| HT30   | HT30SS | HT30S6 | 1 7/8" (1.87)  |
| HT32   | HT32SS | HT32S6 | 2" (2.00)      |
| HT34   | HT34SS | HT34S6 | 2 1/8" (2.12)  |
| HT36   | HT36SS | HT36S6 | 2 1/4" (2.25)  |
| HT38   | HT38SS | HT38S6 | 2 3/8" (2.37)  |
| HT40   | HT40SS | HT40S6 | 2 1/2" (2.50)  |
| HT42   | HT42SS | HT42S6 | 2 5/8" (2.62)  |
| HT46   | HT46SS | HT46S6 | 2 7/8" (2.87)  |
| HT48   | HT48SS | HT48S6 | 3" (3.00)      |
| HT50   | HT50SS | HT50S6 | 3 1/8" (3.12)  |
| HT56   | HT56SS | HT56S6 | 3 1/2" (3.50)  |
| HT64   | HT64SS | HT64S6 | 4" (4.00)      |
| HT66   | HT66SS | HT66S6 | 4 1/8" (4.12)  |
| HT72   | HT72SS | HT72S6 | 4 1/2" (4.50)  |



- The Cush-A-Nator® "Cool Blue" has service temperatures of -65°F to 340°F (-53°C to 170°C)

| Cush-A-Nator® Standard<br>[extended temperature -50°F to 275°F] |        |        |                |
|---|--------|--------|----------------|
| Part No.  |        |        | O.D. Tube Size |
| Steel   | SS304  | SS316  |                |
| CN04  | CN04SS | CN04S6 | 1/4" (0.25)    |
| CN06  | CN06SS | CN06S6 | 3/8" (0.37)    |
| CN08  | CN08SS | CN08S6 | 1/2" (0.50)    |
| CN10  | CN10SS | CN10S6 | 5/8" (0.62)    |
| CN12  | CN12SS | CN12S6 | 3/4" (0.75)    |
| CN14  | CN14SS | CN14S6 | 7/8" (0.87)    |
| CN16  | CN16SS | CN16S6 | 1" (1.00)      |
| CN18  | CN18SS | CN18S6 | 1 1/8" (1.12)  |
| CN20  | CN20SS | CN20S6 | 1 1/4" (1.25)  |
| CN22  | CN22SS | CN22S6 | 1 3/8" (1.37)  |
| CN24  | CN24SS | CN24S6 | 1 1/2" (1.50)  |
| CN26  | CN26SS | CN26S6 | 1 5/8" (1.62)  |
| CN28  | CN28SS | CN28S6 | 1 3/4" (1.75)  |
| CN30  | CN30SS | CN30S6 | 1 7/8" (1.87)  |
| CN32  | CN32SS | CN32S6 | 2" (2.00)      |
| CN34  | CN34SS | CN34S6 | 2 1/8" (2.12)  |
| CN36  | CN36SS | CN36S6 | 2 1/4" (2.25)  |
| CN38  | CN38SS | CN38S6 | 2 3/8" (2.37)  |
| CN40  | CN40SS | CN40S6 | 2 1/2" (2.50)  |
| CN42  | CN42SS | CN42S6 | 2 5/8" (2.62)  |
| CN46  | CN46SS | CN46S6 | 2 7/8" (2.87)  |
| CN48  | CN48SS | CN48S6 | 3" (3.00)      |
| CN50  | CN50SS | CN50S6 | 3 1/8" (3.12)  |
| CN56  | CN56SS | CN56S6 | 3 1/2" (3.50)  |
| CN64  | CN64SS | CN64S6 | 4" (4.00)      |
| CN66  | CN66SS | CN66S6 | 4 1/8" (4.12)  |
| CN72  | CN72SS | CN72S6 | 4 1/2" (4.50)  |



- The Cush-A-Nator® standard has an operating range of -50°F to 275°F (-45°C to 135°C)

| Cush-A-Nator® "Cool Blue"<br>[extended temperature -65°F to 340°F] |         |         |                |
|--|---------|---------|----------------|
| Part No.   |         |         | Pipe Size      |
| Steel  | SS304   | SS316   |                |
| HT14P  | HT14PSS | HT14PS6 | 1/2" (0.840)   |
| HT17P  | HT17PSS | HT17PS6 | 3/4" (1.050)   |
| HT21P  | HT21PSS | HT21PS6 | 1" (1.315)     |
| HT30P  | HT30PSS | HT30PS6 | 1 1/2" (1.900) |
| HT38P  | HT38PSS | HT38PS6 | 2" (2.375)     |
| HT46P  | HT46PSS | HT46PS6 | 2 1/2" (2.875) |
| HT56P  | HT56PSS | HT56PS6 | 3" (3.500)     |
| HT64P  | HT64PSS | HT64PS6 | 3 1/2" (4.000) |
| HT72P  | HT72PSS | HT72PS6 | 4" (4.500)     |

| Cush-A-Nator® Standard<br>[extended temperature -50°F to 275°F] |         |         |                |
|---|---------|---------|----------------|
| Part No.  |         |         | Pipe Size      |
| Steel   | SS304   | SS316   |                |
| CN14P   | CN14PSS | CN14PS6 | 1/2" (0.840)   |
| CN17P   | CN17PSS | CN17PS6 | 3/4" (1.050)   |
| CN21P   | CN21PSS | CN21PS6 | 1" (1.315)     |
| CN30P   | CN30PSS | CN30PS6 | 1 1/2" (1.900) |
| CN38P   | CN38PSS | CN38PS6 | 2" (2.375)     |
| CN46P   | CN46PSS | CN46PS6 | 2 1/2" (2.875) |
| CN56P   | CN56PSS | CN56PS6 | 3" (3.500)     |
| CN64P   | CN64PSS | CN64PS6 | 3 1/2" (4.000) |
| CN72P   | CN72PSS | CN72PS6 | 4" (4.500)     |



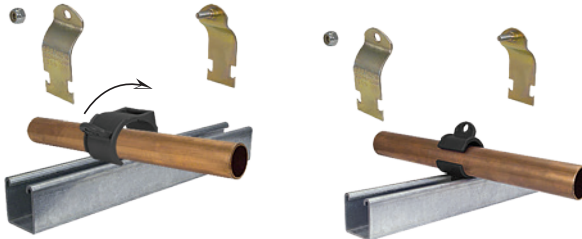
## Cush-A-Nator® – New Installations

**Step 1:**



**Step 2:**

Insert the Cush-A-Nator® onto the pipe and then use the exclusive "Thumb Drive" to rotate into position.



**Step 3:**

Add Pipe Clamps and tighten the assembly.



## Cush-A-Nator® – Retrofit / Replacement Applications

A key feature of the Cush-A-Nator® is this ability to place the cushion and rotate into position. *Perfect for retrofit applications!*

### Retrofit - The Common Problem

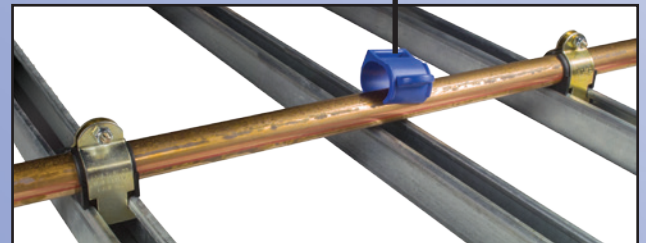
Replacing a cushion within a long pipe run poses a problem. Clamps before and after the one to be replaced prohibit the pipe from being raised so that the new cushion can be installed correctly. All too often a work-around is used which compromises the connection.

### Retrofit - The Perfect Solution

**Step 1:** Remove Bad Cushion.

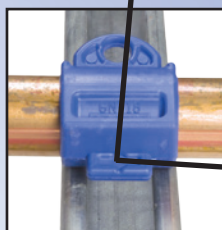
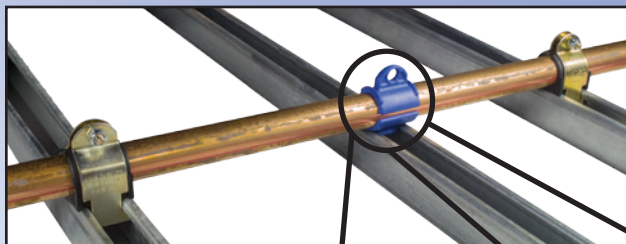


**Step 2:** The Cush-A-Nator can be installed without raising the pipe. The unique "Thumb Drive" allows you to rotate the Cush-A-Nator into position.

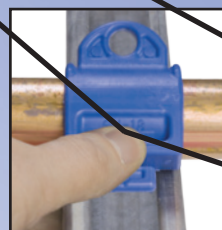


**Step 3:** Rotated into place while on the channel and the Self-Alignment tab automatically aligns with the channel opening ready for clamping.

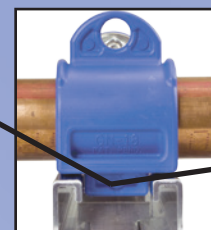
**Step 3:** Add Pipe Clamps and tighten the assembly.



Rotate into Position



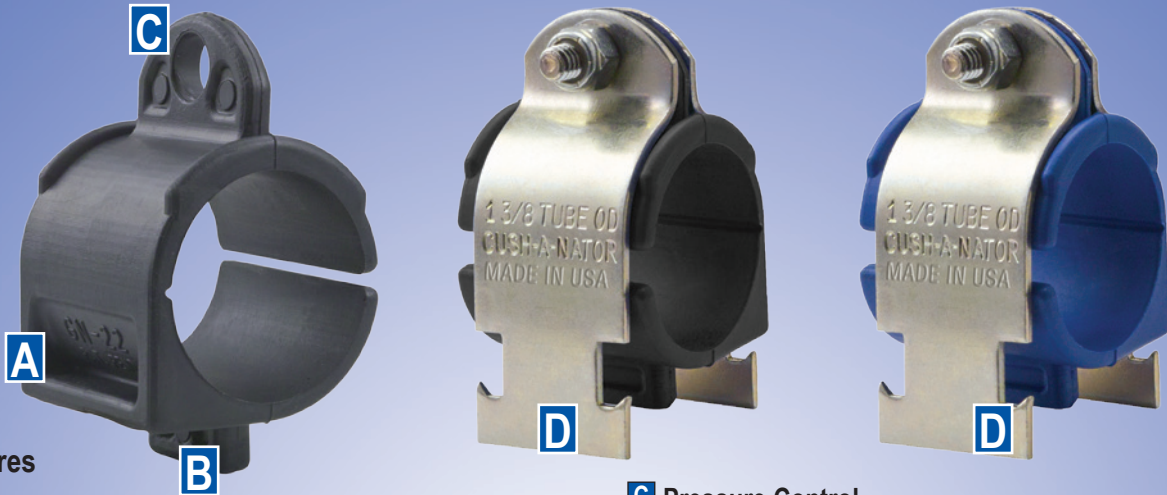
Thumb Drive



"Self-Alignment"



The Cush-A-Nator® is designed to provide the user with a choice of the highest heat range resistance of any cushion on the market or simply the advanced features of a superior design. *The Cush-A-Nator® is designed and manufactured in Michigan.*



### Features

#### A Thumb Drive

The Cush-A-Nator® has the exclusive "Thumb Drive" that provides the installer a gripping point to easily open the cushion with the help of leverage tabs and a living hinge. Easy and effortlessly to install.

#### B Self-Alignment

Cushion can be opened and placed over the pipe or tube and rotated into place while on the channel and automatically aligned with the channel opening ready for clamping.

#### C Pressure Control

The Cush-A-Nator® cushion has a built in squeeze control as part of the cushion design. The side opening and the squeeze control tab provides evenly distributed pressure around the tube or pipe.

#### D Complete Clamping Unit

The Cush-A-Nator® is the only strut mounted cushion that is mechanically connected to the supporting steel clamp because the bolt passes through the squeeze control tab forming the single unit connection. This design helps prevent the cushion from excess vibration by being attached directly to the clamp.

## Your Single Source for Cushioned Clamping and Quick Disconnects



DISTRIBUTED BY:



### ZSI, INC.

45065 Michigan Ave.  
Canton, MI 48188  
Tel: (734) 844-0055  
Tel: (800) 323-7053  
Fax: (734) 844-0066