



HVAC/R INSULATED TUBING & PIPE SUPPORTS REFRIGERATION COMPONENTS

CUSH-A-BLOCK ROOFTOP SUPPORT SYSTEMS



The CBN Series is UV resistant and suitable for installation on most types of roofing material or other flat surfaces. Can be used as a curb (sleeper) replacement. Screw fasteners

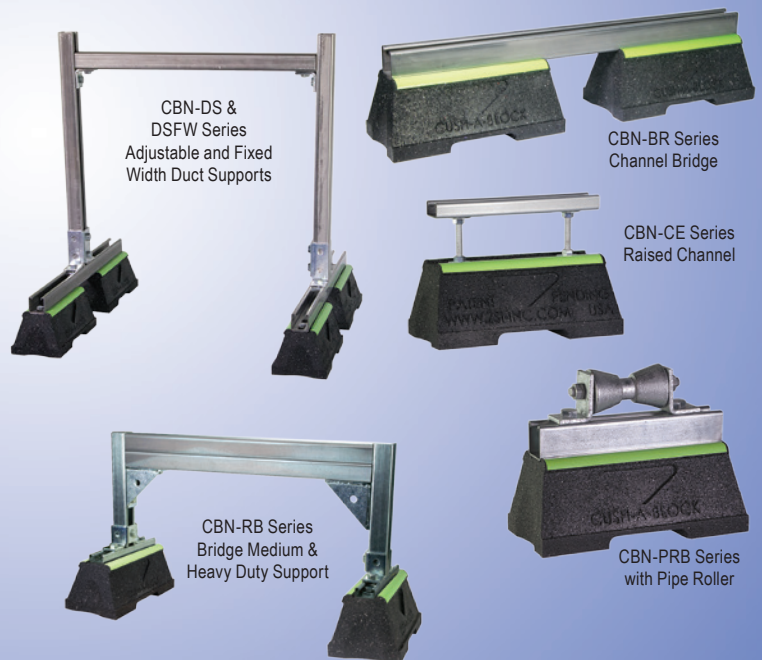
can be used to attach one or two hole pipe straps or a piece of strut. Standard strut mount pipe clamps are used to secure the pipes. The CBN Series provides a longer mounting surface with strut lengths up to 46.82".

- 100% Recycled Rubber
- Qualifies for LEED Credits
- Meets the Buy America Act and American Reinvestment Recovery Act (A.R.R.A.)
- Resistance to Freeze and Thaw
- Reflective Eco-Green Stripes for Easy Visibility
- Dampens Vibrations
- Compatible With Most Rooftop Materials
- Easy to Change Strut Without Moving or Lifting Block
- Strut is Available in Corrosion Resistant Stainless Steel and Aluminum

Cush-A-Block Support Applications:

- Solar Racking
- Pipe & Conduit supports
- HVAC, Duct, Cable Tray supports
- Air Conditioning supports
- Roof Walkway supports

Channel for Cush-A-Block support assemblies can be made in special lengths, finishes, and alloys including Aluminum, 304 & 316 Stainless Steel, PVC or Powder coated, Zinc Trivalent Chromium, Pre-Galvanized and Hot Dipped Galvanized.



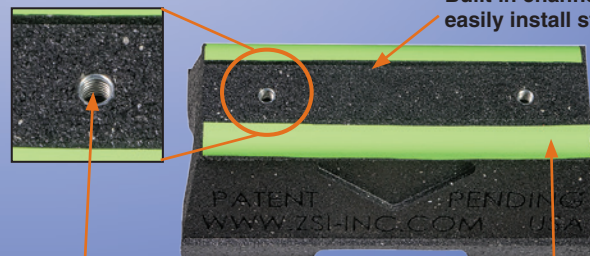
CBN-DS & DSW Series Adjustable and Fixed Width Duct Supports

CBN-BR Series Channel Bridge

CBN-CE Series Raised Channel

CBN-RB Series Bridge Medium & Heavy Duty Support

CBN-PRB Series with Pipe Roller



Built in channel guide to easily install strut straight.

Embedded fastener reduces time to install or change strut. Use 3/8" x 3/4" bolts

Eco-Green Reflective Safety Strip is molded into the block, and will not flake or peel.



CUSH-A-NATOR®



The **Cush-A-Nator®** cushion is manufactured in the United States and made from a new incredibly durable thermoplastic rubber that resists high heat and provides longer life against vibration fatigue. The Cush-A-Nator® is made from a proprietary thermoplastic vulcanized material cross-linked with high performance rubber and thermoplastic elastomers, which produces the highest operating temperature range in the industry.

- The Cush-A-Nator is designed & manufactured in Michigan.

The Cush-A-Nator "Cool Blue" has a temp range of -65°F to 340°F



The Cush-A-Nator standard has a temp range of -50°F to 275°F

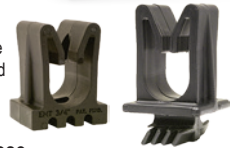


CUSH-A-CLAW™

The **Cush-A-Claw™** Grasps your Tube, Pipe, or Hose and holds it in place. The unique one piece patent pending design allows for quick, and simple installation. It will not rust because it's molded from the same TPE Material of some that you've come to know and trust.

- Temp Range: -50° to 275° F
- Non Conducting, Will not Rust
- Sure Grip Base easily rotates into strut
- Easy Snap-in Installation of Tube, Pipe, or Hose
- Prevents Galvanic Corrosion of Dissimilar Metals

Surface Mounted



Strut Mounted

OMEGA SERIES™

Omega Series™ – The Omega Series™ clamp assembly retains, guides, protects line runs. Attached with two standard fasteners to any flat surface, the clamp eliminates the use of special channels, providing a savings in both space & cost.

- Temp Range: -50° to 275° F
- Interlock edge ensures it remains in place.



Stainless Steel



CAL-CLAMP INSULATION

The **Cal-Clamp** is a crush-resistant insulation clamp. Works equally well on both hot and cold lines. Asbestos Free Calcium Silicate, treated for water resistance, encased in a 360° Metal jacket

- Minimum 140 PSI compressive strength
- Working Temperature is 42° to 1200° F
- The Model CWP is for applications requiring a wet lag insulation.



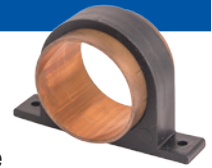
CUSH-A-CLAMP®



Cush-A-Clamp® – Channel mounted clamping systems are ideal for multiple line runs, while absorbing shock and vibration, reducing unwanted noise and preventing galvanic corrosion. Cush-A-Clamp® fits any standard 1-5/8" channel. Steel clamps for tube sizes up to 1-3/8" have the "Controlled Squeeze™" design which eliminates over-tightening.

CUSH-A-GLIDE

The **Cush-A-Glide** is designed for fast installation of copper tube or pipe. Just spread the clamp apart placing over tube or pipe and fasten one side. Push in the opposite side to the desired tightness, allowing for expansion and contraction, then fasten the other side.



- Temp. range: -50°F to 275°F
- Prevents galvanic corrosion

CUSH-A-GRIP

The **Cush-A-Grip** has multi-size adjustment capability allows four clamp sizes to fit fifteen sizes of tube and pipe. Comes complete with stainless steel bolt and captured nylon lock nut. It is multi-environmental and can cover a wide range of applications and maintain thermal barrier.



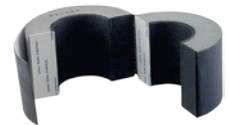
- Temperature range: -40°F to +380°F
- No galvanic reaction, Will not rust, permissible outdoors

CUSH-A-THERM™

The **Cush-A-Therm™** Clamp is a fast easy way to provide a crush-resistant airtight seal for chilled refrigeration or mechanical pipe-lines that require continuous insulation. The rigid foam construction has an insulating tape inner lining which supports tube and absorbs vibration of operating pipelines. The outer cover consists of a special rubber coating which seals the cushion completely after installation in order to prevent condensation.



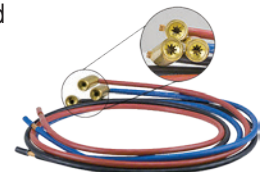
- Temperature range: -70°F to +250°F
- Maintains thermal barrier protection
- Prevents condensation



GATOR-LOK

Our patented design was made to be one-of-a-kind with not 1 but 2 layers of "Lok"ing technology. Constructed with 10 gauge, 30 inch copper-wire leads.

- Two layers of "Lok"ing technology
- Easily replaces damaged wire leads
- Installs in under five minutes





AIRSTRIP™ INSULATION



The **AIRSTRIP™** is designed to dampen the noise and vibration that can occur between piping or duct work and the supporting channel.

Made from 64 Durometer Santoprene, the **AIRSTRIP™** is light weight, dependable, and long-lasting.



CUSH-A-STRIP™ INSULATION



Cush-A-Strip™ is manufactured from a thermoplastic elastomer. **Cush-A-Strip** is packaged in 20 foot rolls in an E-Z dispenser box for convenience in handling and storage. The special locking lip edges ensure that **Cush-A-Strip™** will remain in place with a balanced grip.

SNAP-A-SADDLE™

The **SNAP-A-SADDLE™** provides an easy way to attach insulated pipes to support channel, with one step, tool-free installation.

- Temp Range: -50° to 275°F
- Available in both black & white
- UL94-HB1 Rated TPV Material
- Made in USA
- Easy Installation
- Standard 12" lengths.



SADDLE-UP

The **Saddle-Up** Pipe Insulation Saddle is a formed metal shield designed to allow insulated refrigeration pipe or tubing to pass through the support without need to compromise the vapor barrier and protects from crushing or damage at hanger and support locations.



QUICK-CLIP



Quick-Clip's unique one-piece, strong and lightweight composite polyamide alloy design is tested from -40°F to +275°F. The clip can be installed single-handedly, for fast, easy installation that saves time and money. It will overcome the problems of using cable ties for piping, electrical, optical and network cabling.

ALPHA SERIES™

Alpha Series™ – Designed for the tough jobs, the **U-Bolt Assembly** secures pipe runs to any flat surface. The cushion designed provides total load distribution, allowing the **U-Bolt** to become a full contact hanger, eliminating knife-edge loading. The **U-Bolt** traps and secures the cushion in place to prevent lateral movement, while nylon insert locknuts provide a positive lock.



CUSH-A-CLICK

The **Cush-A-Click** is ideal for the installation of refrigeration systems allowing the barrier seal to run the length of the pipe work without cutting the insulation material. It helps retain an unbroken vapor barrier seal, eliminating the problem of sweating on metal fittings.



CUSH-A-CLIP™

The **Cush-A-Clip™** is a simple, economical, lightweight hanger for supporting tubing. The one piece design makes installation a snap with no nuts to tighten or parts to lose. Secure but non-tightening design allows for expansion, greatly reducing joint fractures



LOOP CLAMPS

Clamps that can be slipped over a tube or wire and closed with a bolt at assembly. Holes provide easy alignment. E.P.D.M. cushion for electrical insulation and vibration absorption. The steel clamps are zinc electroplated for corrosion resistance



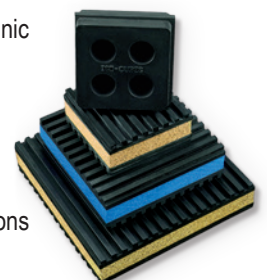
CUSH-A-RING

The **Cush-A-Ring** is a unique rubber lined hanger for copper and steel tube or pipe. The 2-1/2" thru 4" sizes are a two-part clamp that has a hinged side with a single screw patented locking system. The quick locking system is easy to close which makes it faster for installation. The noise insulating rubber lining is made of UV-resistant EPDM rubber. The **Cush-A-Ring** is zinc plated for corrosion resistance.



GAMMA PADS

The effects of vibration, shock, surge, galvanic corrosion and unwanted noise are a major concern. Improperly cushioned equipment, pipe, tube, or hose invites failure and potential problems. New developments in cushioned clamping and vibration isolation products from ZSI provide the proper solutions to combat these effects.

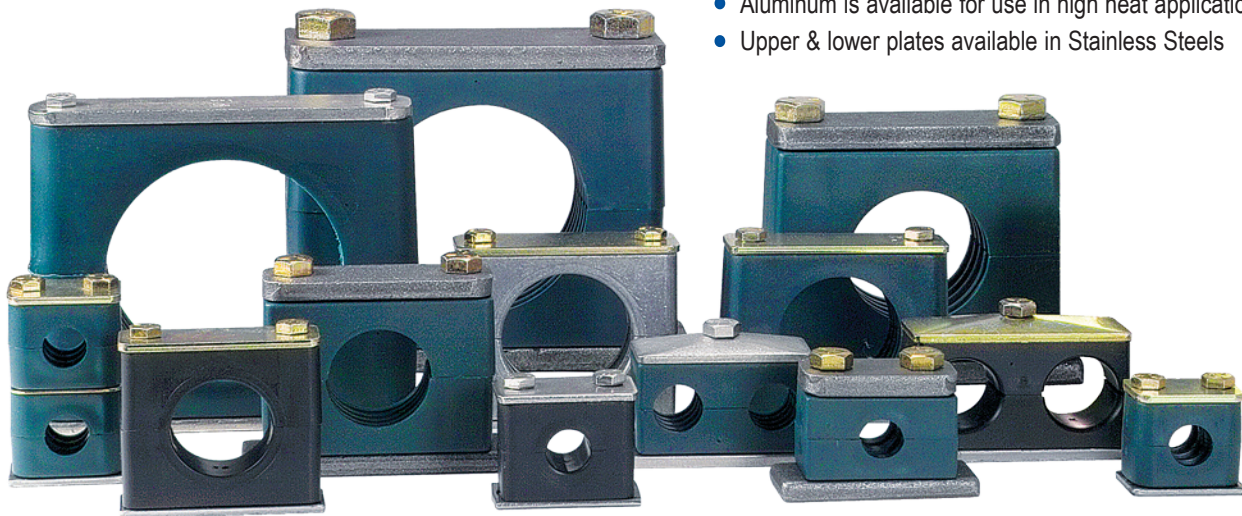




BETA CLAMPS

Beta Clamps are ideal for clamping pipe, tube, hose, and electric cables. They are an economical and easy way of securing them in all types of terrestrial, marine, O.E.M. and Industrial applications. Beta Clamps are used in all areas of industrial, mobile and marine hydraulics, general industrial pipe construction, the field of press technology, instrumentation and control technology and many more.

- Beta Clamps offer shock-absorption, vibration dampening and noise reducing properties.
- Using weldable plates, it's easy to anchor the clamps to machinery and steel work.
- Ribs in clamp bore are designed to absorb shock and vibration in the direction of the tube axis.
- Clamp Body Standard – Polypropylene (Green Color) -22°F to 194°F
- Aluminum is available for use in high heat applications
- Upper & lower plates available in Stainless Steels



FULL LINE OF QUICK DISCONNECTS

ZSi offers quick detachable couplers, hose fittings, blow guns and related accessories for use with various gasses and liquids. The most common applications for our products are for compressed air, hydraulic oil, and water. Other media are often used with our products when they are determined to be compatible with our specific materials of construction



DISTRIBUTED BY:



ZSi-Foster

45065 Michigan Ave.
Canton, MI 48188
Tel: (734) 844-0055
Tel: (800) 323-7053
Fax: (734) 844-0066