

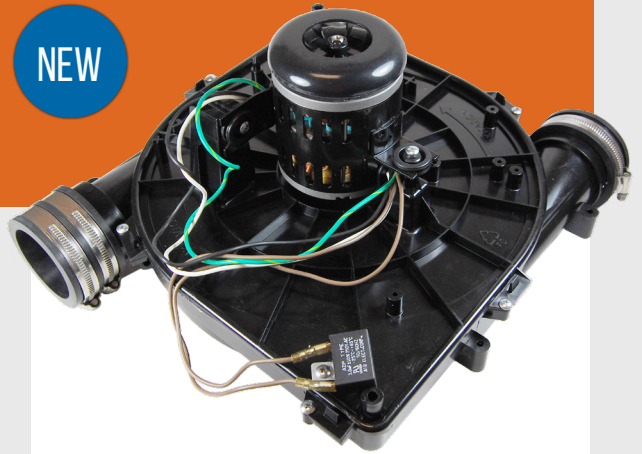
OEM REPLACEMENT DRAFT INDUCERS



A ROBUST SELECTION OF
DRAFT INDUCERS TO SATISFY
YOUR CUSTOMERS' NEEDS!

PACKARD SERVICE

Packard is committed to quality service and a focus on what is essential to wholesalers and your contractors. Your phone call will always be answered by our friendly staff to get you the answers you need fast. **Plus, ask your customer service representative about same day shipping!**

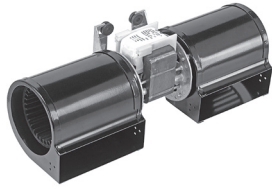


CARRIER REPLACEMENT
66756, 66757, 66758

Adaptability

Vent from the right or left side of the furnace with the double exhaust design!

OEM REPLACEMENT DRAFT INDUCERS



ALADDIN STEEL
Replacement

Item Specs	A120
HP	1/40
Volts	120
RPM	3000
Amps	1.10
Speeds	2
Type	Shaded Pole
Bearings	Ball
Enclosure	Open
Hertz	60
Replaces*	7002-2983 230-1460



AMANA
Replacement

Item Specs	82862
HP	1/35
Volts	208-240
RPM	3000
Amps	0.50-0.59
Speeds	1
Type	Shaded Pole
Bearings	Sleeve
Enclosure	Open
Hertz	60
Overload	Automatic
Replaces*	6D1073UN 098862-1



AMANA
Replacement

Item Specs	A158
HP	1/25
Volts	115
RPM	3450
Amps	0.70
Speeds	1
Type	PSC
Bearings	Sleeve
Enclosure	Open
Hertz	60
Overload	Automatic
Replaces*	D98686-7 7062-3151



AMANA
Replacement

Item Specs	A180
HP	1/30
Volts	115
RPM	3400
Amps	1.80
Speeds	1
Type	Shaded Pole
Bearings	Ball
Enclosure	Open
Hertz	60
Overload	Automatic
Replaces*	20190601 7021-9625



**AMANA, ARMSTRONG,
MAGIC PAK** Replacement

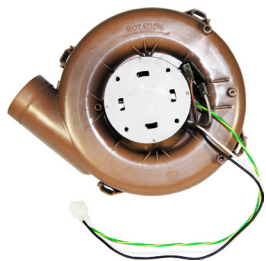
Item Specs	66426K
HP	1/30
Volts	208-230
RPM	3000
Amps	0.65
Speeds	1
Type	Shaded Pole
Bearings	Ball
Enclosure	Open
Hertz	60
Overload	Automatic
Replaces*	36HWC SERIES 48HWC SERIES



AMANA, MAGIC CHEF
Replacement

Item Specs	80280
HP	1/50
Volts	208-230
RPM	3000
Amps	0.8
Speeds	1
Type	SP
Bearings	Ball
Enclosure	Open
Hertz	60
Overload	Automatic
Replaces*	48SS400626 D69964-4

OEM REPLACEMENT DRAFT INDUCERS



ARMSTRONG Replacement

Item Specs	66404
HP	1/30
Volts	115
RPM	3300
Amps	0.53
Speeds	1
Type	PSC
Bearings	Ball
Enclosure	Open
Hertz	60
Overload	Automatic
Replaces*	117521
	117521-00



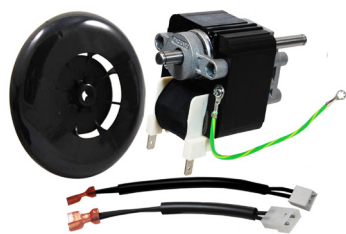
ARMSTRONG Replacement

Item Specs	80280
HP	1/50
Volts	208-230
RPM	3000
Amps	0.55
Speeds	1
Type	Shaded Pole
Bearings	Ball
Enclosure	Open
Hertz	60
Overload	Automatic
Replaces*	35035B1
	36HWC241



BURNHAM Replacement

Item Specs	66056
Volts	115
RPM	3000
Amps	0.48
Speeds	1
Type	PSC
Bearings	Ball
Enclosure	Open
Hertz	60
Overload	Automatic
Replaces*	8116227
	6116056



CARRIER Replacement

Item Specs	65569	65570
MHP	25	25
Volts	115	230
RPM	3300	3300
Amps	1.80	0.85
Speeds	1	1
Shaft Dimension(in)	1 x 5/16 x 1 7/8	1 x 5/16 x 1 7/8
Length Less Shaft (in)	3 3/8	3 5/8
Type	SP	SP
Bearings	Ball	Ball
Hertz	60	60
Overload	Automatic	Automatic
Replaces*	HC21ZE117	J238-15161
	HC21ZE115	HC24HE230



CARRIER Replacement

Item Specs	66649
HP	1/16
Volts	208-230
RPM	3450
Amps	0.5
Speeds	1
Rotation	CCWSE
Type	PSC
Bearings	Ball
Enclosure	Open
Hertz	60
Replaces*	48GS400649
	48GS400106

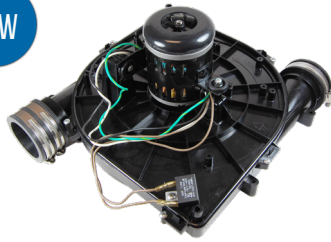


CARRIER Replacement

Item Specs	66755
Watts	40
Volts	115
RPM	3300
Amps	0.86
Speeds	1
Rotation	CWSE
Type	PSC
Bearings	Ball
Hertz	60
Overload	Automatic
Replaces*	309868-755
	309868755

OEM REPLACEMENT DRAFT INDUCERS

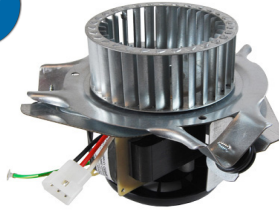
NEW



CARRIER Replacement

Item Specs	66756	66757	66758
Watts	58	58	78
Volts	115	115	115
RPM	3300	3300	3400
Inlet	1 3/4"	3"	3"
Amps	0.85	0.85	1.15
Speeds	1	1	1
Rotation	CW	CW	CW
Type	PSC	PSC	PSC
Bearings	Ball	Ball	Ball
Hertz	60	60	60
Replaces*	320725-756	320725-757	320725-758

NEW



CARRIER Replacement

Item Specs	66761	66762	66763
MHP	8.2	16	28
Volts	115	115	115
RPM	3000	3000	3000
Amps	0.63/0.3	1.06/0.28	1.32/0.39
Speeds	2	2	2
Rotation	CWSE	CWSE	CWSE
Type	Shaded Pole	Shaded Pole	Shaded Pole
Bearings	Ball	Ball	Ball
Hertz	60	60	60
Replaces*	326628-761	326628-762	326628-763



CARRIER Replacement

Item Specs	66815	66816
HP	1/16	1/16
Volts	208-230	460
RPM	3450	3450
Amps	0.48	0.25
Speeds	1	1
Type	PSC	PSC
Bearings	Ball	Ball
Enclosure	Open	Open
Hertz	60	60
Overload	Automatic	Automatic
Replaces*	50DK406815	50DK406816



FEDDERS Replacement

Item Specs	82618
HP	1/50
Volts	115/230
RPM	3000
Amps	0.90/0.45
Speeds	1
Type	SP
Bearings	Ball
Enclosure	Open
Hertz	60
Overload	Automatic
Replaces*	17-9-959-1 030-7059



GOODMAN Replacement

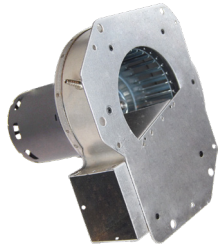
Item Specs	48331	48332
Volts	115	115
RPM	3200	3200/2800
Amps	1.80	1.80/1.10
Speeds	1	2
Type	SP	SP
Bearings	Ball	Ball
Enclosure	Open	Open
Hertz	60	60
Overload	Automatic	Automatic
Replaces*	B4833000 B4833000S	B4833001 B4833001S



GOODMAN Replacement

Item Specs	66002
Stack	1 1/2"
Volts	115
RPM	3000
Amps	1.20
Speeds	1
Type	SP
Bearings	Ball
Enclosure	Open
Hertz	60
Overload	Automatic
Replaces*	B4059001 0131M00002P

OEM REPLACEMENT DRAFT INDUCERS



GOODMAN
Replacement

Item Specs	66003
Volts	115
RPM	3250
Amps	0.92
Speeds	1
Type	SP
Bearings	Sleeve
Enclosure	Open
Hertz	60
Overload	Automatic
Replaces*	7021-9259
	7021-7006



GOODMAN
Replacement

Item Specs	66005
HP	1/30
Volts	115
RPM	3000
Amps	1.60
Speeds	1
Type	SP
Bearings	Ball
Enclosure	Open
Hertz	60
Overload	Automatic
Replaces*	B1859005
	B1859005S



GOODMAN
Replacement

Item Specs	66071
Stack (in)	1.5
Volts	120
RPM	3000
Amps	2.8
Speeds	1
Type	SP
Bearings	Ball
Enclosure	Open
Hertz	60
Overload	Automatic
Replaces*	0171M00000S
	0171M00000



GOODMAN
Replacement

Item Specs	66121
HP	1/50
Volts	230
RPM	3000
Amps	0.22
Speeds	1
Type	PSC
Bearings	Ball
Enclosure	Open
Hertz	60
Overload	Automatic
Replaces*	0131M00121
	0131M00121P



GOODMAN
Replacement

Item Specs	66590
HP	1/30
Volts	115
RPM	3000
Amps	1.50
Speeds	1
Type	SP
Bearings	Ball
Enclosure	Open
Hertz	60
Overload	Automatic
Replaces*	J238-11195
	B4059000



GOODMAN
Replacement

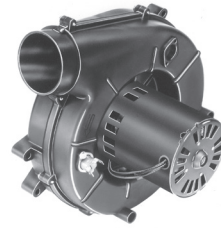
Item Specs	66959
HP	1/30
Volts	208/230
RPM	3000
Amps	0.60/0.56
Speeds	1
Type	SP
Bearings	Ball
Enclosure	Open
Hertz	60
Overload	Automatic
Replaces*	B2959000S
	7021-8656

OEM REPLACEMENT DRAFT INDUCERS



GOODMAN
Replacement

Item Specs	82483
HP	1/50
Volts	115
RPM	3000
Amps	0.9
Speeds	1
Type	SP
Bearings	Ball
Enclosure	Open
Hertz	60
Overload	Automatic
Replaces*	4MH15 B1859000



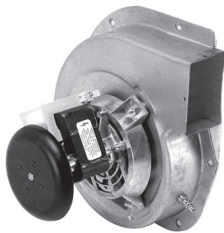
GOODMAN
Replacement

Item Specs	A140
HP	1/50
Volts	115
RPM	3400
Amps	1.40
Speeds	1
Type	Shaded Pole
Bearings	Sleeve
Enclosure	Open
Hertz	60
Overload	Automatic
Replaces*	B2833001S B2833001



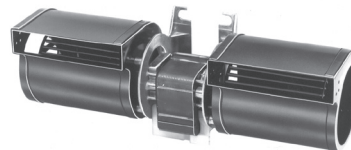
GOODMAN
Replacement

Item Specs	A162
HP	1/50
Volts	208-230
RPM	3000
Amps	0.50
Speeds	1
Type	Shaded Pole
Bearings	Sleeve
Enclosure	Open
Hertz	60
Overload	Automatic
Replaces*	B295900 7021-8656



GOODMAN
Replacement

Item Specs	A182
HP	1/35
Volts	115
RPM	3125
Amps	1.20
Speeds	1
Type	Shaded Pole
Bearings	Sleeve
Enclosure	Open
Hertz	60
Overload	Automatic
Replaces*	B4059000 7002-3036



HEAT N' GLOW
Replacement

Item Specs	A133
Volts	115
RPM	3000
Amps	1.20
Speeds	1
Type	Shaded Pole
Enclosure	Open
Hertz	60
Replaces*	7002-1241

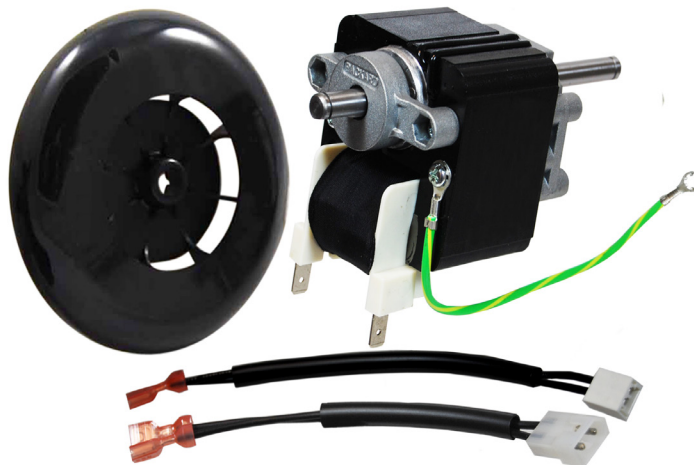


HEIL-QUAKER
Replacement

Item Specs	A064
HP	1/55
Volts	115
RPM	3150
Amps	0.70
Speeds	1
Type	Shaded Pole
Bearings	Sleeve
Enclosure	Open
Hertz	60
Overload	Automatic
Replaces*	608971 7021-7102

PACKARD SELECTION

Packard distributes the widest variety of direct replacement draft inducers for popular and hard-to-find OEMs. You can feel comfortable knowing our detailed cross-referencing and technical support services will ensure that your contractors get the exact parts they need quickly, and at the best value, making it easy to bring comfort during the cold weather season to those who ultimately matter the most—the homeowners.

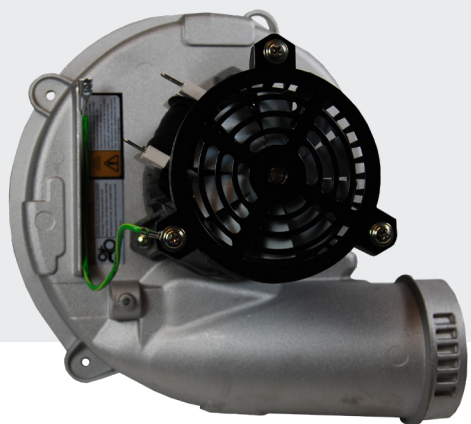


CARRIER REPLACEMENT 65569

- C-frame combustion motor kit
- Special leads and plug included
- Plastic fan blade included
- 1 1/2" stack
- CW rotation is determined by viewing the shaft end

PACKARD'S MOST POPULAR

DRAFT INDUCERS!

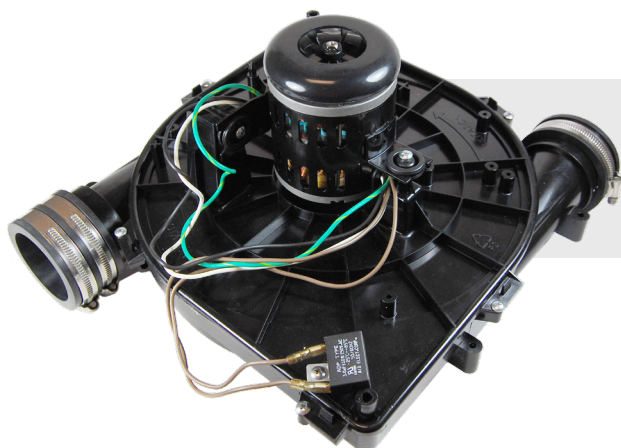
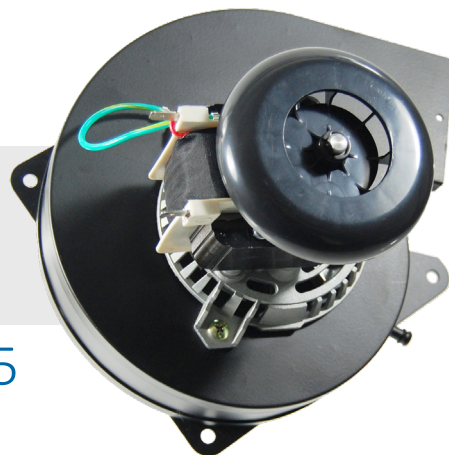


RHEEM REPLACEMENT 66847

- Replaces Rheem 70-22162-81
- Includes gasket

GOODMAN REPLACEMENT 66005

- Replaces Goodman B1859005
and B1859005S
- Includes gasket



CARRIER REPLACEMENT 66756

- Replaces Carrier 320725-756
- Capacitor included
- Includes 3 prong molex plug
- Easy installation

OEM REPLACEMENT DRAFT INDUCERS



ICP Replacement

Item Specs	66254
HP	1/50
Volts	230
RPM	3000
Amps	0.30
Speeds	1
Type	PSC
Bearings	Ball
Enclosure	Open
Hertz	60
Overload	Automatic
Replaces*	1010008
	7021-10580



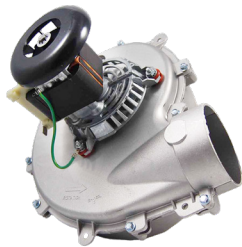
ICP Replacement

Item Specs	66338
MHP	50
Volts	115
RPM	3000
Amps	2.40
Speeds	1
Type	SP
Bearings	Ball
Enclosure	Totally Enclosed
Hertz	60
Overload	Automatic
Replaces*	1013915
	1014338



ICP Replacement

Item Specs	66350
HP	1/25
Volts	115
RPM	3350
Amps	0.92
Speeds	1
Type	PSC
Bearings	Ball
Enclosure	Open
Hertz	60
Overload	Automatic
Replaces*	HQ1011350
	1002543



ICP Replacement

Item Specs	66833
MHP	28
Volts	115
RPM	3000
Amps	1.60
Speeds	1
Type	SP
Bearings	Ball
Enclosure	Open
Hertz	60
Overload	Automatic
Replaces*	1010238
	1013833



ICP Replacement

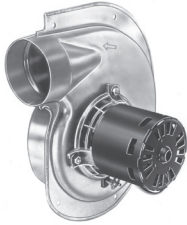
Item Specs	82148
HP	1/30
Volts	208-230
RPM	3000
Amps	0.16
Type	PSC
Bearings	Ball
Enclosure	Open
Hertz	60
Overload	Automatic
Replaces*	4MH37
	1054268P



ICP Replacement

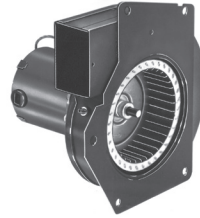
Item Specs	82672
HP	1/60
Volts	115
RPM	3300
Amps	0.90
Type	SP
Bearings	Sleeve
Enclosure	Open
Hertz	60
Overload	Automatic
Replaces*	1005425
	1006168P

OEM REPLACEMENT DRAFT INDUCERS



ICP Replacement

Item Specs	A134
HP	1/25
Volts	115
RPM	3060
Amps	1.50
Speeds	1
Type	Shaded Pole
Bearings	Sleeve
Enclosure	Open
Hertz	60
Overload	Automatic
Replaces*	1010238P
	1708607



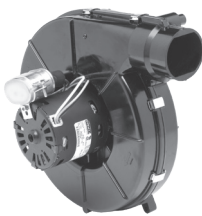
ICP Replacement

Item Specs	A148
HP	1/50
Volts	208-230
RPM	3000
Amps	0.50
Speeds	1
Type	Shaded Pole
Bearings	Sleeve
Enclosure	Open
Hertz	60
Overload	Automatic
Replaces*	4MH37
	HQ1054268FA



ICP Replacement

Item Specs	A170
HP	1/25
Volts	115
RPM	3400
Amps	2.30
Speeds	1
Type	Shaded Pole
Bearings	Ball
Enclosure	Open
Hertz	60
Overload	Automatic
Replaces*	7021-8918
	1164280



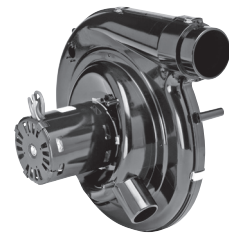
ICP Replacement

Item Specs	A171
HP	1/25
Volts	115
RPM	3450
Amps	0.70
Speeds	1
Type	PSC
Bearings	Ball
Enclosure	Open
Hertz	60
Overload	Automatic
Replaces*	1010491
	1010527P



ICP Replacement

Item Specs	A172
HP	1/35
Volts	115
RPM	3000
Amps	1.60
Speeds	1
Type	Shaded Pole
Bearings	Ball
Enclosure	Open
Hertz	60
Overload	Automatic
Replaces*	7002-2633
	1010975P



ICP Replacement

Item Specs	A173
HP	1/18
Volts	115
RPM	3450
Amps	0.80
Speeds	1
Type	PSC
Bearings	Ball
Enclosure	Open
Hertz	60
Overload	Automatic
Replaces*	7062-4785
	1011350

OEM REPLACEMENT DRAFT INDUCERS



ICP Replacement

Item Specs	A307
HP	1/24
Volts	115
RPM	3450
Amps	0.70
Speeds	1
Type	PSC
Bearings	Sleeve
Enclosure	Open
Hertz	60
Overload	Automatic
Replaces*	7062-2714
	1008416P



JOHNSON Replacement

Item Specs	80280
HP	1/50
Volts	230
RPM	3000
Amps	0.55
Speeds	1
Type	SP
Bearings	Ball
Enclosure	Open
Hertz	60
Overload	Automatic
Replaces*	8973C
	48HWC181



LENNOX Replacement

Item Specs	66093
Stack (in)	5/8
Volts	120
RPM	3000
Amps	0.43
Speeds	1
Type	SP
Bearings	Ball
Enclosure	Open
Hertz	60
Overload	Automatic
Replaces*	80C93



LENNOX Replacement

Item Specs	66300
HP	1/25
Volts	120
RPM	3300
Amps	1.50
Speeds	1
Type	SP
Bearings	Sleeve
Rotation	CWSE
Enclosure	Open
Hertz	60
Overload	Automatic
Replaces*	76714300
	20J89



LENNOX Replacement

Item Specs	66401
HP	1/60
Volts	120
RPM	2800
Amps	1.30
Speeds	1
Type	SP
Bearings	Ball
Enclosure	Open
Hertz	60
Overload	Automatic
Replaces*	67M5401
	43K4101



LENNOX Replacement

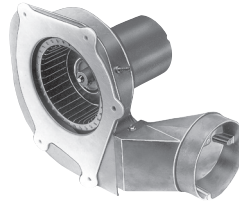
Item Specs	66501
HP	1/30
Volts	115
RPM	3000
Amps	1.20
Speeds	1
Type	SP
Bearings	Ball
Enclosure	Open
Hertz	60
Overload	Automatic
Replaces*	24W9501
	31L 5501

OEM REPLACEMENT DRAFT INDUCERS



LENNOX Replacement

Item Specs	82590
Volts	115
RPM	3000
Amps	1.20
Speeds	1
Type	SP
Bearings	Sleeve
Enclosure	Open
Hertz	60
Overload	Automatic
Replaces*	47H1201
	47H12



LENNOX Replacement

Item Specs	A155
HP	1/30
Volts	115
RPM	3000
Amps	1.40
Speeds	1
Type	Shaded Pole
Bearings	Ball
Enclosure	Open
Hertz	60
Overload	Automatic
Replaces*	40425-003
	7021-10046



LENNOX Replacement

Item Specs	A163
HP	1/20
Volts	115
RPM	3400
Amps	1.80
Speeds	1
Type	Shaded Pole
Bearings	Ball
Enclosure	Open
Hertz	60
Overload	Automatic
Replaces*	67K0401
	7021-9450



LENNOX Replacement

Item Specs	A200
HP	1/30
Volts	115
RPM	3000
Amps	1.35
Speeds	1
Type	Shaded Pole
Bearings	Sleeve
Enclosure	Open
Hertz	60
Overload	Automatic
Replaces*	313L5501
	7002-2975



LENNOX Replacement

Item Specs	A202
HP	1/30
Volts	115
RPM	3400
Amps	1.80
Speeds	1
Type	Shaded Pole
Bearings	Ball
Enclosure	Open
Hertz	60
Overload	Automatic
Replaces*	7021-10602
	58W01



MILLER Replacement

Item Specs	80270
HP	1/50
Volts	115/230
RPM	3000
Amps	0.90/0.45
Speeds	1
Type	SP
Bearings	Ball
Enclosure	Open
Hertz	60
Overload	Automatic
Replaces*	408
	AK2H199AX

The FASCO logo is displayed in white, bold, uppercase letters within a blue rectangular box. The background of the entire advertisement is a blue-tinted image of HVAC equipment, including a furnace and a draft inducer, with a blue semi-transparent banner at the top.

FASCO

TWO COMPANIES. TWO GOALS. QUALITY PRODUCTS AND SERVICES

Packard is proud to supply a wide range of Fasco[®] draft inducers to meet your needs in a constantly evolving market.

Fasco[®] is a valuable industry leader in direct replacement and OEM draft inducers.

The Packard logo features the brand name in a blue, italicized font with a stylized wave graphic above the 'd'. Below the name is the tagline "Supplying HVACR solutions with your needs in mind." in a smaller, black font.

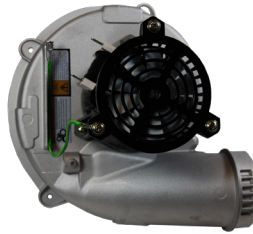
Packard
Supplying HVACR solutions with your needs in mind.

OEM REPLACEMENT DRAFT INDUCERS



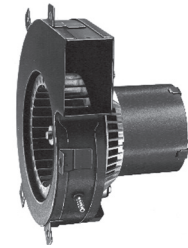
RHEEM Replacement

Item Specs	66781
HP	1/50
Volts	115
RPM	3000
Amps	0.60
Speeds	1
Type	PSC
Bearings	Ball
Enclosure	Open
Hertz	60
Overload	Automatic
Replaces*	7021-11559 70-101087-81



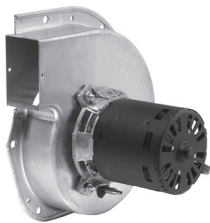
RHEEM Replacement

Item Specs	66847
HP	1/30
Volts	120
RPM	3000
Amps	1.70
Speeds	1
Type	SP
Bearings	Ball
Enclosure	Open
Hertz	60
Overload	Automatic
Replaces*	70-22838-02 70-24157-03



RHEEM Replacement

Item Specs	A090
HP	1/50
Volts	115
RPM	3000
Amps	1.10
Speeds	1
Type	Shaded Pole
Bearings	Sleeve
Enclosure	Open
Hertz	60
Overload	Automatic
Replaces*	70-21496-01 7021-5239



RHEEM Replacement

Item Specs	A241
HP	1/25
Volts	208-230
RPM	3200
Amps	0.62
Speeds	1
Type	Shaded Pole
Bearings	Sleeve
Enclosure	Open
Hertz	60
Overload	Automatic
Replaces*	7021-9567 70-23641-81



SKYMARK Replacement

Item Specs	82136
HP	1/35
Volts	208-230
RPM	3000
Amps	0.56
Speeds	1
Type	SP
Bearings	Sleeve
Enclosure	Open
Hertz	60
Overload	Automatic
Replaces*	7021-9136 MTR136PK



TRANE Replacement

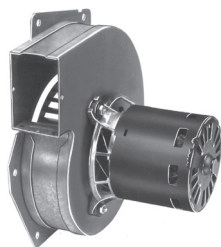
Item Specs	66787
HP	1/30
Volts	120
RPM	3000
Amps	1.3
Speeds	1
Type	SP
Bearings	Ball
Enclosure	Open
Hertz	60
Overload	Automatic
Replaces*	D330787P01 BLW01437

OEM REPLACEMENT DRAFT INDUCERS



TRANE Replacement

Item Specs	82057
HP	1/40
Volts	115
RPM	3000
Amps	1.00
Speeds	1
Type	SP
Bearings	Ball
Enclosure	Open
Hertz	60
Overload	Automatic
Replaces*	7021-8569 X38040253057



TRANE Replacement

Item Specs	A143
HP	1/50
Volts	115
RPM	3000
Amps	0.95
Speeds	1
Type	Shaded Pole
Bearings	Sleeve
Enclosure	Open
Hertz	60
Overload	Automatic
Replaces*	7002-2558 X38040305017



TRANE Replacement

Item Specs	A150
HP	1/35
Volts	208-230
RPM	3000
Amps	0.50
Speeds	1
Type	Shaded Pole
Bearings	Sleeve
Enclosure	Open
Hertz	60
Overload	Automatic
Replaces*	4MH39 X38080029010



TRANE Replacement

Item Specs	A192
HP	1/40
Volts	115
RPM	3000
Amps	1.00
Speeds	1
Type	Shaded Pole
Bearings	Ball
Enclosure	Open
Hertz	60
Overload	Automatic
Replaces*	7021-8569 X38040253057



WEIL MCCLAIN Replacement

Item Specs	66312
Watts	1/8
Volts	115
RPM	3100
Amps	1.8
Speeds	1
Type	PSC
Bearings	Ball
Enclosure	Open
Hertz	60
Overload	Automatic
Replaces*	510-312-312



YORK Replacement

Item Specs	A137
HP	1/25
Volts	115
RPM	3450
Amps	0.70
Speeds	1
Type	PSC
Bearings	Sleeve
Enclosure	Open
Hertz	60
Overload	Automatic
Replaces*	7062-2442 024-25007-700

OEM REPLACEMENT DRAFT INDUCERS



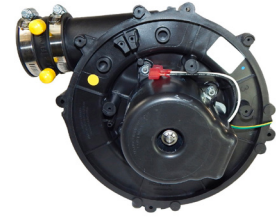
YORK
Replacement

Item Specs	A165
HP	1/25
Volts	115
RPM	3450
Amps	0.70
Speeds	1
Type	PSC
Bearings	Ball
Enclosure	Open
Hertz	60
Overload	Automatic
Replaces*	7062-3958
	024-25960-000



YORK
Replacement

Item Specs	A223
HP	1/30
Volts	208-230
RPM	3200
Amps	0.64
Speeds	1
Type	Shaded Pole
Bearings	Sleeve
Enclosure	Open
Hertz	60
Overload	Automatic
Replaces*	7021-9656
	026-33999-001



YORK
Replacement

Item Specs	A984
Volts	115
RPM	3000
Amps	2.63
Speeds	1
Rotation	CCW0SE
Type	Shaded Pole
Bearings	Ball
Enclosure	Enclosed
Hertz	60
Overload	Automatic
Replaces*	341449
	7058-1023



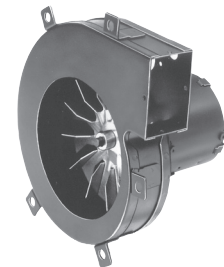
YORK
Replacement

Item Specs	A225
HP	1/15
Volts	115
RPM	3200
Amps	2.25
Speeds	1
Type	Shaded Pole
Bearings	Ball
Enclosure	Open
Hertz	60
Overload	Automatic
Replaces*	7021-11577S
	024-34558-000



FASCO
Replacement

Item Specs	A071
Nameplate CFM	71
Volts	115
RPM	2850
Amps	0.7
Speeds	1
Rotation	CCW
Type	Shaded Pole
Bearings	Sleeve
Replaces*	9460

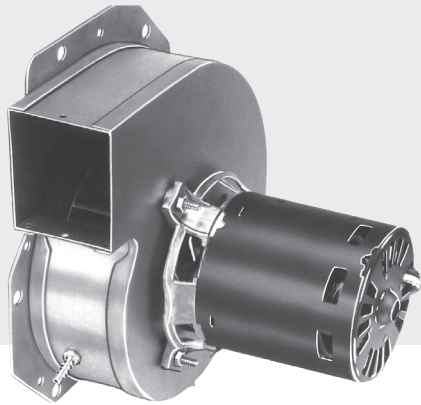


FASCO
Replacement

Item Specs	A082
Nameplate CFM	75
Volts	115
RPM	2800
Amps	0.95
Speeds	1
Rotation	CW
Type	Shaded Pole
Bearings	Sleeve
Replaces*	7021-7586

FASCO'S MOST POPULAR

DRAFT INDUCERS!



AMANA REPLACEMENT A129

- Shaded pole
- 60 HZ
- Automatic overload
- Single phase



ICP REPLACEMENT A170

- Shaded pole
- 60 Hz
- Automatic overload
- Ball bearing
- Single phase



LENNOX REPLACEMENT A163

- Shaded pole
- 60 HZ
- Automatic overload
- Single phase
- Includes gasket

OEM REPLACEMENT DRAFT INDUCERS



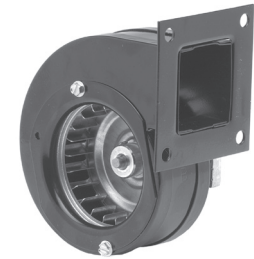
FASCO
Replacement

Item Specs	A125
Nameplate CFM	125
Volts	115
RPM	3200
Amps	1.1
Speeds	1
Rotation	CW/CCW
Type	Shaded Pole
Bearings	Sleeve
Replaces*	7021-10183
	7021-10749



FASCO
Replacement

Item Specs	A166
Nameplate CFM	115
Volts	115
RPM at Free Air	3200
Amps at Free Air	1.40
Hertz	50/60
Replaces*	4C446
	7021-3469



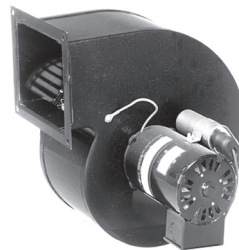
FASCO
Replacement

Item Specs	A167
Nameplate CFM	30
Volts	115
RPM	2900
Amps	0.4
Speeds	1
Rotation	CW
Type	Shaded Pole
Bearings	Sleeve



FASCO
Replacement

Item Specs	A212
Nameplate CFM	212
Volts	115
RPM	2500
Amps	1.25
Speeds	1
Rotation	CW/CCW
Type	Shaded Pole
Bearings	Sleeve
Replaces*	7021-10550
	7021-7624



FASCO
Replacement

Item Specs	A455
Nameplate CFM	455
Volts	115
RPM	1500/1100
Amps	1.5
Speeds	2
Rotation	CW
Type	Shaded Pole
Bearings	Sleeve
Replaces*	9478



FASCO
Replacement

Item Specs	A1000
Nameplate CFM	1000
Volts	115/230
RPM	1100/1100
Amps	4-2.9/2-1.4
Speeds	2
Type	Shaded Pole
Bearings	Sleeve

OEM REPLACEMENT DRAFT INDUCERS



FASCO
Replacement

Item Specs	B30
Nameplate CFM	45
Volts	115
RPM	3200
Amps	0.59
Speeds	1
Rotation	CW
Type	Shaded Pole
Bearings	Sleeve



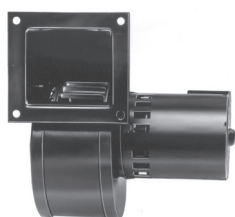
FASCO
Replacement

Item Specs	B75F
Nameplate CFM	75
Volts	115
RPM	3200
Amps	0.59
Speeds	1
Rotation	CW
Type	Shaded Pole
Bearings	Sleeve
Replaces*	989



FASCO
Replacement

Item Specs	A1200
Nameplate CFM	1200
Volts	115/230
RPM	1500/1400
Amps	8-6.8/4-3.4
Speeds	2
Rotation	CW
Type	Shaded Pole
Bearings	Sleeve



FASCO
Replacement

Item Specs	B24220
Nameplate CFM	135
Volts	115
RPM	2600
Amps	1.3
Speeds	1
Rotation	CW
Type	Shaded Pole
Bearings	Sleeve
Replaces*	7021-7462
	7021-7582



FASCO
Replacement

Item Specs	B45230
Nameplate CFM	460
Volts	208-230
RPM	1600/1400
Amps	1.2
Speeds	2
Rotation	CCW
Type	Shaded Pole
Bearings	Sleeve



FASCO
Replacement

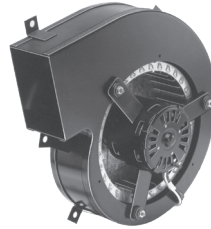
Item Specs	B45227	B45227-2
Nameplate CFM	265	265
Volts	115	230
RPM	1650	1650
Amps	1.86	0.93
Speeds	1	1
Rotation	CW	CW
Type	Shaded Pole	Shaded Pole
Bearings	Sleeve	Sleeve
Replaces*	7063-4755	-
	7063-4769	-

OEM REPLACEMENT DRAFT INDUCERS



FASCO
Replacement

Item Specs	B45267
Nameplate CFM	460
Volts	115
RPM at Free Air	1600/1400
Amps at Free Air	2.90
Speeds	2
Bearings	Sleeve
Hertz	60
Replaces*	7063-4794
	7063-5034



FASCO
Replacement

Item Specs	B47120
Nameplate CFM	180
Volts	115
RPM at Free Air	1360/1100/830
Amps at Free Air	1.95
Speeds	3
Bearings	Sleeve
Hertz	60
Replaces*	7063-5986
	9471

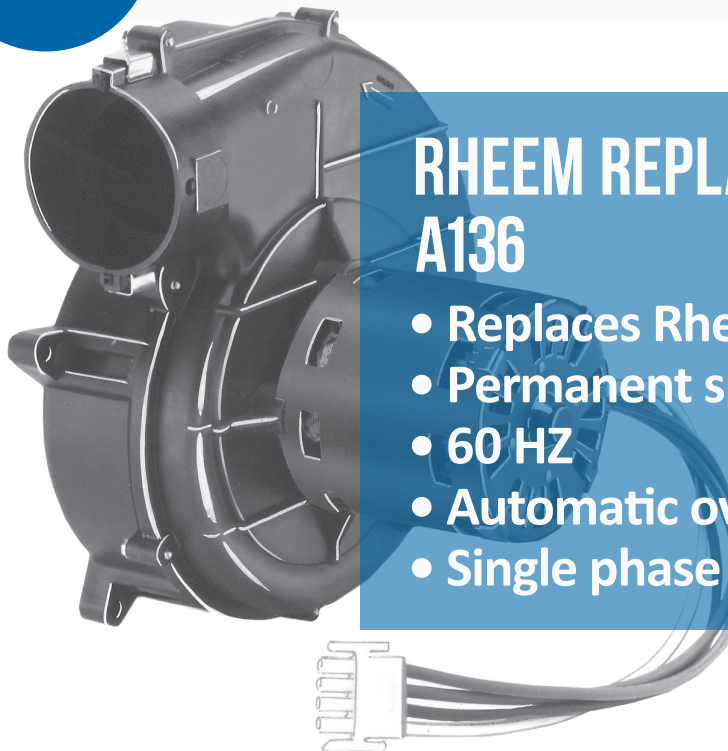


FASCO
Replacement

Item Specs	B68042
Nameplate CFM	815
Volts	115
RPM	1100
Amps	5.6
Speeds	1
Rotation	CW
Type	Shaded Pole
Bearings	Sleeve

#1

SELLING FASCO DRAFT INDUCER!



RHEEM REPLACEMENT A136

- Replaces Rheem 70-24033-01, 9471
- Permanent split capacitor
- 60 HZ
- Automatic overload
- Single phase

OEM DIRECT REPLACEMENT DRAFT INDUCERS



AMANA Replacement

Item ID	HP	Volts	RPM	Amps	Speeds	Rotation	Type	Bearings	Enclosure	Hertz	Replaces
A286	1/35	208/230	3125	0.6	1	CW	SP	Sleeve	Open	60	11096904, 7021-9398



AMANA Replacement

Item ID	HP	Volts	RPM	Amps	Speeds	Rotation	Type	Bearings	Enclosure	Hertz	Replaces
A289	1/32	208/230	3125	0.75	1	CW	SP	Ball	Open	60	20351402, 7058-0081



AMANA Replacement

Item ID	HP	Volts	RPM	Amps	Speeds	Rotation	Type	Bearings	Enclosure	Hertz	Replaces
A160	1/30	115	3000	1.6	1	CW	SP	Sleeve	Open	60	20044401, 7021-8252 7002-2407



AMANA Replacement

Item ID	HP	Volts	RPM	Amps	Speeds	Rotation	Type	Bearings	Enclosure	Hertz	Replaces
A180	1/30	115	3400	1.80	1	CW	SP	Ball	Open	60	20190601, 7021-9625



AMANA Replacement

Item ID	HP	Volts	RPM	Amps	Speeds	Rotation	Type	Bearings	Enclosure	Hertz	Replaces
A185	1/30	115	3000	1.15	1	CW	SP	Sleeve	Open	60	105854-04, 7021-9316



AMANA Replacement

Item ID	HP	Volts	RPM	Amps	Speeds	Rotation	Type	Bearings	Enclosure	Hertz	Replaces
A158	1/25	115	3450	0.70	1	CW	PSC	Sleeve	Open	60	D98686-7, 7062-3151



AMANA Replacement

Item ID	HP	Volts	RPM	Amps	Speeds	Rotation	Type	Bearings	Enclosure	Hertz	Replaces
A280	1/25	115	3000	1.5	1	CW	SP	Sleeve	Open	60	D986868, 7021-7794
A283	1/25	115	3000	1.5	1	CCW	SP	Sleeve	Open	60	D9868617, 7021-8730



AMANA Replacement

Item ID	HP	Volts	RPM	Amps	Speeds	Rotation	Type	Bearings	Enclosure	Hertz	Replaces
A287	1/25	115	3000	1.15	1	CW	SP	Sleeve	Open	60	10585405, 7021-9655



AMANA Replacement

Item ID	HP	Volts	RPM	Amps	Speeds	Rotation	Type	Bearings	Enclosure	Hertz	Replaces
A129	1/20	115	3250	1.95	1	CW	SP	Sleeve	Open	60	7021-9064 7021-9259

Packard



CARRIER Replacement

Item ID	Watts	Volts	RPM	Amps	Speeds	Type	Bearings	Enclosure	Hertz	Overload	Replaces
65230	28	208-230	3000	0.80	1	SP	Ball	Open	60	Automatic	48SS400626 HC24HE230

Packard



CONSOL. IND./UNIVERSAL Replacement

Item ID	HP	Volts	RPM	Amps	Type	Bearings	Enclosure	Hertz	Overload	Replaces
82570	1/33	115	3300	0.9	SP	Sleeve	Open	60	Automatic	401570, JA1P082



CHOICE VENDING Replacement

Item ID	HP	Volts	RPM	Amps	Speeds	Rotation	Type	Bearings	Diameter (in)	Enclosure	Hertz	Replaces
A087	1/6	115/230	2400	2.8/1.1	1	CCW	PSC	Sleeve	3.3	Open	60	7062-3496 7062-4687

Packard



COLEMAN VENDING Replacement

Item ID	HP	Volts	RPM	Amps	Speeds	Rotation	Type	Bearings	Hertz	Overload	Replaces
65475	1/150	115	3315	0.4	1	CCWSE	SP	Ball	60	Automatic	373-19801-820 373-19801-821



COLEMAN EVCON Replacement

Item ID	HP	Volts	RPM	Amps	Speeds	Rotation	Type	Bearings	Enclosure	Replaces
A156	1/35	115	3000	1.1	1	CW	SP	Sleeve	Open	7021-10882, 7021-8935, 2702321P



COLEMAN EVCON Replacement

Item ID	HP	Volts	RPM	Amps	Speeds	Rotation	Type	Bearings	Enclosure	Replaces
A088	1/25	115	3200	1.3	1	CW	SP	Sleeve	Open	7021-10267, 7021-9908, D6868608, 7021-5478



CONSOLIDATED INC. Replacement

Item ID	HP	Volts	RPM	Amps	Speeds	Rotation	Type	Bearings	Diameter (in)	Replaces
A128	1/50	120	3000	0.9	1	CW	SP	Sleeve	3.3	7021-10271, 7021-6376 7021-9404, 302065



EXCEL COMFORT Replacement

Item ID	HP	Volts	RPM	Amps	Speeds	Rotation	Type	Bearings	Diameter	Replaces
A100	1/45	115	2900	1.21	1	CW	SP	Sleeve	C-Frame	20093603, 7058-0280



RICK'S TECH TIP

Rick Streacker
National Training Coordinator



To help avoid tragedies where individuals, and even families, succumb to carbon monoxide, only professional technicians using the proper equipment should install and repair these devices.

With draft inducers, the technician should only use replacements that match or cross to the OEM part number on the blower. After installing, check the furnace using a combustion analyzer to ensure that the manufacturer's specifications are met. Always check carbon monoxide levels in the living area to determine that they are safe as well.

Be safe and always use the correct draft inducer, check combustion, and measure carbon monoxide levels!



Check out our Packard Academy YouTube Channel for more quality technical training and information on the latest HVACR products!



FEDDERS Replacement												
Item ID	HP	Volts	RPM	Amps	Speeds	Rotation	Type	Bearings	Enclosure	Hertz	Replaces	
A159	1/40	230	1550	0.5	1	CW	SP	Ball	Open	60	7063-7334, AK4K84BX 11-7096	



FEDDERS Replacement												
Item ID	HP	Volts	RPM	Amps	Speeds	Rotation	Type	Bearings	Enclosure	Hertz	Replaces	
A161	1/40	230	1600	0.6	1	CCW	SP	Ball	Open	60	7063-7943 8353920103	



FRANKLIN Replacement												
Item ID	Volts	RPM	Amps	Speeds	Rotation	Type	Bearings	Enclosure	Diameter (in)	Replaces		
B23617	115/230	3000	0.9/0.45	1	CCW	SP	Sleeve	Open	3.3	303875, 7021-10288 7021-5703		



FRANKLIN Replacement												
Item ID	Volts	RPM	Amps	Speeds	Rotation	Type	Bearings	Enclosure	Diameter (in)	Replaces		
B23618	115/208-230	3000	0.95/0.45	1	CCW	SP	Ball	Open	3.3	031-7059, 7021-10289 7021-5932		



FRYMASTER Replacement												
Item ID	HP	Volts	RPM	Amps	Speeds	Rotation	Type	Bearings	Enclosure	Diameter	Replaces	
A110	1/70	115	3212	0.76	1	CW	SP	Ball	C-Frame		7002-3093, 7002-3512 7021-0898	



GOODMAN Replacement												
Item ID	HP	Volts	RPM	Amps	Speeds	Rotation	Type	Bearings	Enclosure	Diameter (in)	Replaces	
A079	1/50	115	3000	1.10	1	CCW	SP	Sleeve	Totally Enclosed	3.3	B1859000 74-70-21964-03-01 7021-6804	



GOODMAN Replacement												
Item ID	HP	Volts	RPM	Amps	Speeds	Rotation	Type	Bearings	Enclosure	Diameter (in)	Replaces	
A282	1/60	220	2600	0.45	1	CCW	SP	Sleeve	Open	3.3	B1859050S, 7021-8448	



GOODMAN Replacement												
Item ID	HP	Volts	RPM	Amps	Speeds	Rotation	Type	Bearings	Enclosure	Diameter (in)	Replaces	
A140	1/50	115	3400	1.40	1	CCW	SP	Sleeve	Open	3.3	B2833001S, B2833001 7021-9000, 7021-9087 FB-RFB140	



GOODMAN Replacement												
Item ID	HP	Volts	RPM	Amps	Speeds	Rotation	Type	Bearings	Enclosure	Diameter (in)	Replaces	
A281	1/40	115	3000	0.9	1	CW	SP	Sleeve	Open	3.3	D6996405, 7021-8252	



GOODMAN Replacement												
Item ID	HP	Volts	RPM	Amps	Speeds	Rotation	Type	Bearings	Enclosure	Diameter (in)	Replaces	
A285	1/40	115	3250	1.4	2	CW	SP	Sleeve	Open	3.3	B2833002, 7021-9236	



GOODMAN Replacement												
Item ID	HP	Volts	RPM	Amps	Speeds	Rotation	Type	Bearings	Enclosure	Diameter	Replaces	
A157	1/35	115	3000	1.3	1	CCW	SP	Sleeve	Open	C-Frame	7002-2307	



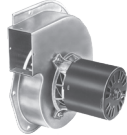
GOODMAN Replacement												
Item ID	HP	Volts	RPM	Amps	Speeds	Rotation	Type	Bearings	Enclosure	Diameter	Replaces	
A184	1/35	115	3125	1.55	1	CCW	SP	Ball	Open	C-Frame	B4059001, 7058-0229	

**GOODMAN Replacement**

Item ID	HP	Volts	RPM	Amps	Speeds	Rotation	Type	Bearings	Enclosure	Diameter	Replaces
A181	1/30	115	3192	1.5	1	CW	SP	Ball	Open	C-Frame	20044403, 7058-0136

**GOODMAN Replacement**

Item ID	HP	Volts	RPM	Amps	Speeds	Rotation	Type	Bearings	Enclosure	Diameter (in)	Replaces
A284	1/30	208/240	3000	0.59/0.5	1	CW	SP	Sleeve	Open	3.3	D9886202, 7021-9227

**GOODMAN Replacement**

Item ID	HP	Volts	RPM	Amps	Speeds	Rotation	Type	Bearings	Enclosure	Diameter (in)	Replaces
A288	1/30	115	3100	1.4/65	2	CW	SP	Ball	Open	3.3	11177202, 7021-9727

**GOODMAN Replacement**

Item ID	HP	Volts	RPM	Amps	Speeds	Rotation	Type	Bearings	Enclosure	Diameter (in)	Replaces
A189	1/24	115	3000	1.5	1	CW	SP	Ball	Open	3.3	D988620, 7021-7302

**GOODMAN Replacement**

Item ID	HP	Volts	RPM	Amps	Speeds	Rotation	Type	Bearings	Enclosure	Diameter (in)	Replaces
A290	1/20	115	3200/2400	0.7	2	CCW	PSC	Ball	Open	3.3	20245903, 7062-5015

**GOODMAN Replacement**

Item ID	HP	Volts	RPM	Amps	Speeds	Rotation	Type	Bearings	Enclosure	Diameter (in)	Replaces
A187	1/20	208-230	3250	0.8	1	CW	SP	Sleeve	Open	3.3	20028901, 7021-10006

**GOODMAN Replacement**

Item ID	HP	Volts	RPM	Amps	Speeds	Rotation	Type	Bearings	Enclosure	Diameter (in)	Replaces
A188	1/18	115	3250	1.6	1	CW	SP	Sleeve	Open	3.3	B4833000, 7021-10958

Packard**ICP Replacement**

Item ID	HP	Volts	RPM	Amps	Speeds	Rotation	Type	Bearings	Enclosure	Diameter	Replaces
66529	1/35	115	3000	1.50	1	CCWSE	SP	Ball		100011645, 10011645, 10011945 1014433, 1014529	

**ICP Replacement**

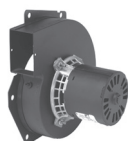
Item ID	HP	Volts	RPM	Amps	Speeds	Rotation	Type	Bearings	Enclosure	Diameter	Replaces
A174	1/100	115	2350	0.8	1	CW	SP	Sleeve	Open		1010239, 7021-9188
A301	1/100	115	2350	0.8	1	CW	SP	Sleeve	Open		1010239, 1094073

**ICP Replacement**

Item ID	HP	Volts	RPM	Amps	Speeds	Rotation	Type	Bearings	Enclosure	Diameter	Replaces
A151	1/90	230	2800	0.3	1	CW	SP	Sleeve	Open		1050144, 1170870 4MH40, 7021-10287

**ICP Replacement**

Item ID	HP	Volts	RPM	Amps	Speeds	Rotation	Type	Bearings	Enclosure	Diameter	Replaces
A141	1/60	115	2800	1	1	CW	SP	Ball	Open		1094073, 1094074 4MH33, 7021-10280 7021-8741, 7021-8742

**ICP Replacement**

Item ID	HP	Volts	RPM	Amps	Speeds	Rotation	Type	Bearings	Enclosure	Diameter	Replaces
A179	1/60	115	3300	0.9	1	CW	SP	Sleeve	Open		1006168P, 7021-8693



ICP Replacement

Item ID	HP	Volts	RPM	Amps	Speeds	Rotation	Type	Bearings	Enclosure	Replaces
A175	1/40	115	3300	1.0	1	CCW	SP	Sleeve	Open	1708600, 7002-1891



ICP Replacement

Item ID	HP	Volts	RPM	Amps	Speeds	Rotation	Type	Bearings	Enclosure	Replaces
A177	1/36	115	3000	1.4	2	CW	SP	Ball	Open	1011632, 7021-10363



ICP Replacement

Item ID	HP	Volts	RPM	Amps	Speeds	Rotation	Type	Bearings	Enclosure	Replaces
A178	1/30	115	3400	1.8	1	CW	SP	Ball	Open	1012002, 1013188



ICP Replacement

Item ID	HP	Volts	RPM	Amps	Speeds	Rotation	Type	Bearings	Enclosure	Replaces
A306	1/30	208-230	3350/2900	0.3	2	CCW	PSC	Sleeve	Open	1097245, 7062-4532



ICP Replacement

Item ID	HP	Volts	RPM	Amps	Speeds	Rotation	Type	Bearings	Enclosure	Replaces
A302	1/25	115	3060	1.5	1	CW	SP	Sleeve	Open	1010324P, 7021-9499, 7021-9277
A304	1/25	115	3060	1.5	1	CW	SP	Sleeve	Open	7021-9701, 1011021



ICP Replacement

Item ID	HP	Volts	RPM	Amps	Speeds	Rotation	Type	Bearings	Enclosure	Replaces
A176	1/25	115	3100	2.2	1	CW	SP	Ball		1011899, 7002-2946



ICP Replacement

Item ID	HP	Volts	RPM	Amps	Speeds	Rotation	Type	Bearings	Enclosure	Replaces
A145	1/25	115	3450	0.7	1	CCW	PSC	Ball	Open	1008695, 4MH47 7021-10299, 7062-4061



ICP Replacement

Item ID	HP	Volts	RPM	Amps	Speeds	Rotation	Type	Bearings	Enclosure	Replaces
A169	1/25	230	2800	0.75	1	CW	SP	Sleeve	Open	1010008, 1085571 1110008, 7021-10048 7021-10580



JOHNSON FURNACE Replacement

Item ID	HP	Volts	RPM	Amps	Speeds	Rotation	Type	Bearings	Diameter (in)	Enclosure	Replaces
A081	1/40	230	3000	0.5	1	CCW	SP	Ball	3.3		36HWC18A, 36HWC241 36HW, 48HW



JOHNSON FURNACE Replacement

Item ID	HP	Volts	RPM	Amps	Speeds	Rotation	Type	Bearings	Enclosure	Diameter (in)	Replaces
A085	1/30	230	3000	0.7	1	CCW	SP	Ball	Open	Open	35035B001, 36HW



LENNOX Replacement

Item ID	HP	Volts	RPM	Amps	Speeds	Rotation	Type	Bearings	Enclosure	Hertz	Overload	Replaces
A138	1/70	120	3000	0.7	1	CCW	SP	Sleeve	Open	60	Auto	7021-8657, 7021-8825



LENNOX Replacement

Item ID	HP	Volts	RPM	Amps	Speeds	Rotation	Type	Bearings	Enclosure	Hertz	Overload	Replaces
A322	1/70	120	3000	1.1	2	CCW	SP	Sleeve	Open	60	Auto	67M6401, 83L8201 24L0101, 7021-9884

**LENNOX Replacement**

Item ID	HP	Volts	RPM	Amps	Speeds	Rotation	Type	Bearings	Enclosure	Hertz	Overload	Replaces
A219	1/65	120	3000	0.7	1	CCW	SP	Sleeve	Open	60	Auto	88J3901, 7021-9262

**LENNOX Replacement**

Item ID	HP	Volts	RPM	Amps	Speeds	Rotation	Type	Bearings	Enclosure	Hertz	Overload	Replaces
A320	1/60	115	3000	0.8	1	CCW	SP	Sleeve	Open	60	Auto	27K6101, 10115401

**LENNOX Replacement**

Item ID	HP	Volts	RPM	Amps	Speeds	Rotation	Type	Bearings	Enclosure	Hertz	Overload	Replaces
A135	1/60	120	3000	0.7	1	CCW	SP	Sleeve	Open	60	Auto	33J4101, 4MH29 7021-10276 7021-8812

**LENNOX Replacement**

Item ID	HP	Volts	RPM	Amps	Speeds	Rotation	Type	Bearings	Enclosure	Hertz	Overload	Replaces
A068	1/60	120	3000	1.15	1	CCW	SP	Ball	Open	60	Auto	88K8401, J238-8171

**LENNOX Replacement**

Item ID	HP	Volts	RPM	Amps	Speeds	Rotation	Type	Bearings	Enclosure	Hertz	Overload	Replaces
A164	1/50	120	3400	0.8	1	CCW	SP	Sleeve	Open	60	Auto	10K5101, 10K5301 43K4101, 46K4101

**LENNOX Replacement**

Item ID	HP	Volts	RPM	Amps	Speeds	Rotation	Type	Bearings	Enclosure	Hertz	Overload	Replaces
A210	1/30	115	3000	1.7	2	CCW	SP	Ball	Open	60	Auto	18M6701, 27M1301

**LENNOX Replacement**

Item ID	HP	Volts	RPM	Amps	Speeds	Rotation	Type	Bearings	Enclosure	Hertz	Overload	Replaces
A201	1/30	208-230	3000	0.65	1	CCW	SP	Ball	Open	60	Auto	41144-001, 41144-002 7021-10055 7021-10743

**LENNOX Replacement**

Item ID	HP	Volts	RPM	Amps	Speeds	Rotation	Type	Bearings	Enclosure	Hertz	Overload	Replaces
A207	1/28	115	3000	1.75	1	CCW	SP	Ball	Open	60	Auto	60M7901, 7058-0217

**LENNOX Replacement**

Item ID	HP	Volts	RPM	Amps	Speeds	Rotation	Type	Bearings	Enclosure	Hertz	Overload	Replaces
A208	1/28	115	3000	1.75	1	CCW	SP	Ball	Open	60	Auto	60M8101, 7058-0322

**LENNOX Replacement**

Item ID	HP	Volts	RPM	Amps	Speeds	Rotation	Type	Bearings	Enclosure	Hertz	Overload	Replaces
A218	1/28	220-240	3000	0.6/0.52	1	CCW	SP	Ball	Open	60	Auto	39L4201, 60J4201

**LENNOX Replacement**

Item ID	HP	Volts	RPM	Amps	Speeds	Rotation	Type	Bearings	Enclosure	Hertz	Overload	Replaces
A206	1/25	115	3000	1.5	1	CW	SP	Sleeve	Open	60	Auto	20J8091, 7021-8473

**LENNOX Replacement**

Item ID	HP	Volts	RPM	Amps	Speeds	Rotation	Type	Bearings	Enclosure	Hertz	Overload	Replaces
A213	1/25	115	3200	2.1	2	CCW	SP	Ball	Open	60	Auto	18L0401, 7021-10376

**LENNOX Replacement**

Item ID	HP	Volts	RPM	Amps	Speeds	Rotation	Type	Bearings	Enclosure	Hertz	Overload	Replaces
A216	1/25	115	3200	2.1	2	CCW	SP	Ball	Open	60	Auto	60L1401, 7021-10915

**LENNOX Replacement**

Item ID	HP	Volts	RPM	Amps	Speeds	Rotation	Type	Bearings	Enclosure	Hertz	Overload	Replaces
A209	1/20	115	3200/2800	0.8	2	CCW	PSC	Ball	Open	60	Auto	38M5001 7062-5441

**LENNOX Replacement**

Item ID	HP	Volts	RPM	Amps	Speeds	Rotation	Type	Bearings	Enclosure	Hertz	Overload	Replaces
A203	1/20	115	3400	1.8	1	CCW	SP	Ball	Open	60	Auto	49L5301, 7021-10841

**LENNOX Replacement**

Item ID	HP	Volts	RPM	Amps	Speeds	Rotation	Type	Bearings	Enclosure	Hertz	Overload	Replaces
A204	1/20	115	3400	1.8	1	CCW	SP	Ball	Open	60	Auto	83L4101, 7021-11406

**LENNOX Replacement**

Item ID	HP	Volts	RPM	Amps	Speeds	Rotation	Type	Bearings	Enclosure	Hertz	Overload	Replaces
A205	1/20	120	3000	0.7	1	CCW	SP	Sleeve	Open	60	Auto	19J0401, 7021-8372 7021-9001, T6-2118

**LENNOX Replacement**

Item ID	HP	Volts	RPM	Amps	Speeds	Rotation	Type	Bearings	Enclosure	Hertz	Overload	Replaces
A217	1/16	230	3000	0.83	1	CCW	SP	Ball	Open	60	Auto	25M5501 7021-11231

**LENNOX Replacement**

Item ID	HP	Volts	RPM	Amps	Speeds	Rotation	Type	Bearings	Enclosure	Hertz	Overload	Replaces
A211	1/15	115	3400	2.35	1	CCW	SP	Ball	Open	60	Auto	81M1601 7021-11634

**LENNOX Replacement**

Item ID	HP	Volts	RPM	Amps	Speeds	Rotation	Type	Bearings	Enclosure	Hertz	Overload	Cap. Req.	Replaces
A324	1/12	230	3200	0.44	1	CW	PSC	Ball	Open	60	Auto	Included	28G6601 7062-1794

**LENNOX Replacement**

Item ID	HP	Volts	RPM	Amps	Speeds	Rotation	Type	Bearings	Enclosure	Hertz	Overload	Cap. Req.	Replaces
A329	1/12	208-230	3200	0.5	1	CW	PSC	Ball	Open	60	Auto	Included	19L1501 7062-4819

**LENNOX Replacement**

Item ID	HP	Volts	RPM	Amps	Speeds	Rotation	Type	Bearings	Enclosure	Hertz	Overload	Cap. Req.	Replaces
A330	1/12	208-230	3200	0.55	1	CW	PSC	Ball	Open	60	Auto	Included	69M3301 97J8201

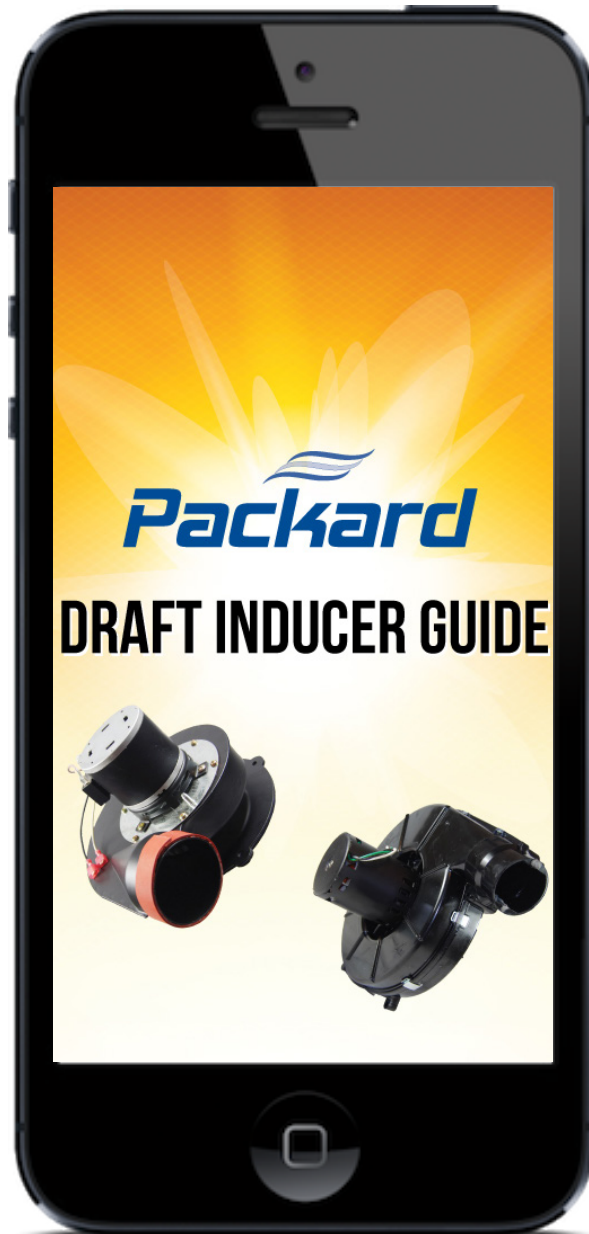
**LENNOX Replacement**

Item ID	HP	Volts	RPM	Amps	Speeds	Rotation	Type	Bearings	Enclosure	Hertz	Overload	Replaces
A325	1/10	208-230	3200	0.6	1	CW	PSC	Ball	Open	60	Auto	98G8701, 99K5701

**LENNOX Replacement**

Item ID	HP	Volts	RPM	Amps	Speeds	Rotation	Type	Bearings	Enclosure	Hertz	Overload	Replaces
A331	1/10	460	3200	0.38/0.33	1	CW	PSC	Ball	Open	60	Auto	69M3201, 97J8101

GET OEM CROSS-REFERENCE AT YOUR FINGERTIPS



Search keyword: Packard Draft Inducer App to download at your App Store.





Packard

NORDYNE Replacement

Item ID	HP	Volts	RPM	Amps	Speeds	Rotation	Type	Bearings	Enclosure	Hertz	Replaces
66567	1/33	115	3000	0.43	1	CCWSE	PSC	Ball	Open	60	622567



Packard

NORDYNE Replacement

Item ID	HP	Stack (in)	Volts	RPM	Amps	Speeds	Type	Bearings	Enclosure	Hertz	Overload	Replaces
65404	1/100	7/8	120	3000	0.3	1	SP	Sleeve	Open	60	Automatic	903404



NORDYNE Replacement

Item ID	HP	Volts	RPM	Amps	Speeds	Rotation	Type	Bearings	Diameter (in)	Replaces
A131	1/50	115	3000	1.1	1	CW	SP	Sleeve	3.3	4MH26, 6212850 6217000, 7021-10159



NORDYNE Replacement

Item ID	HP	Volts	RPM	Amps	Speeds	Rotation	Type	Bearings	Diameter (in)	Replaces
A132	1/50	115	3000	1.1	1	CW	SP	Sleeve	3.3	4MH27, 6212850 7021-10274, 7021-10493



NORDYNE Replacement

Item ID	HP	Volts	RPM	Amps	Speeds	Rotation	Type	Bearings	Diameter (in)	Replaces
A126	1/45	115	3000	1.8	1	CW	SP	Ball	C-Frame	6219500, 7002-3158



NORDYNE Replacement

Item ID	HP	Volts	RPM	Amps	Speeds	Rotation	Type	Bearings	Diameter (in)	Replaces
A121	1/45	240	3000	0.5	1	CW	SP	Sleeve	3.3	6217930, 7021-10381



NORDYNE Replacement

Item ID	HP	Volts	RPM	Amps	Speeds	Rotation	Type	Bearings	Diameter (in)	Replaces
A123	1/18	115	3300	1.95	1	CW	SP	Ball	3.3	622064, 7021-11385



NORDYNE Replacement

Item ID	HP	Volts	RPM	Amps	Speeds	Rotation	Type	Bearings	Diameter (in)	Replaces
A122	1/17	115	3000	1.75	1	CW	SP	Sleeve	3.3	6219490, 7021-11227
A124	1/15	115	3000	1.75	1	CW	SP	Sleeve	3.3	6219290, 7021-11379



RHEEM Replacement

Item ID	HP	Volts	RPM	Amps	Speeds	Rotation	Type	Bearings	Enclosure	Hertz	Overload	Replaces
82182	1/30	460	3300	0.35	1	CWSE	SP	Sleeve	Open	60	Automatic	70-23641-82



RHEEM Replacement

Item ID	HP	Volts	RPM	Amps	Speeds	Type	Bearings	Enclosure	Hertz	Overload	Replaces
82641	1/35	208-230	3200	0.25	1	PSC	Ball	Open	60	Automatic	70-23641-81



RHEEM Replacement

Item ID	HP	Volts	RPM	Amps	Speeds	Rotation	Type	Bearings	Enclosure	Replaces
A139	1/55	115	3000	0.95	1	CW	SP	Sleeve	Open	7021-7577



RHEEM Replacement

Item ID	HP	Volts	RPM	Amps	Speeds	Rotation	Type	Bearings	Enclosure	Replaces
A240	1/50	115	3000	1.1	1	CCW	SP	Sleeve	Open	7021-8183, 70-21496-00

**RHEEM Replacement**

Item ID	HP	Volts	RPM	Amps	Speeds	Rotation	Type	Bearings	Enclosure	Diameter (in)	Replaces
A242	1/50	115	3400	1.36	1	CW	SP	Sleeve	Open	3.3	7021-7150, 70-22436-01

**RHEEM Replacement**

Item ID	HP	Volts	RPM	Amps	Speeds	Rotation	Type	Bearings	Enclosure	Diameter (in)	Replaces
A243	1/50	115	3400	1.36	1	CW	SP	Sleeve	Open	3.3	7021-7790, 70-22436-02

**RHEEM Replacement**

Item ID	HP	Volts	RPM	Amps	Speeds	Rotation	Type	Bearings	Enclosure	Diameter (in)	Replaces
A247	1/40	115	3250/3800	0.95	2	CW	PSC	Sleeve	Open	3.3	7062-5519

**RHEEM Replacement**

Item ID	HP	Volts	RPM	Amps	Speeds	Rotation	Type	Bearings	Enclosure	Diameter (in)	Replaces
A086	1/25	115	3200	1.3	1	CW	SP	Sleeve	Open	3.3	7021-5990, 7021-5853

**RHEEM Replacement**

Item ID	HP	Volts	RPM	Amps	Speeds	Rotation	Type	Bearings	Enclosure	Diameter (in)	Replaces
A246	1/20	115	3400/2400	0.85	2	CW	PSC	Ball	Open	3.3	70-24206-01 7062-3925

**RHEEM Replacement**

Item ID	HP	Volts	RPM	Amps	Speeds	Rotation	Type	Bearings	Enclosure	Diameter (in)	Replaces
A136	1/20	115	3450	0.75	1	CW	PSC	Sleeve	Open	3.3	7062-3861

**RHEEM Replacement**

Item ID	HP	Volts	RPM	Amps	Speeds	Rotation	Type	Bearings	Enclosure	Diameter (in)	Replaces
A142	1/20	115	3450	0.7	1	CW	SP	Sleeve	Open	3.3	7062-2513 416673-00003 7062-1881

**RHEEM Replacement**

Item ID	HP	Volts	RPM	Amps	Speeds	Rotation	Type	Bearings	Enclosure	Diameter (in)	Replaces
A244	1/20	208-230	3300	0.85	1	CCW	SP	Ball	Open	3.3	69M3201, 97J8101

**RHEEM Replacement**

Item ID	HP	Volts	RPM	Amps	Speeds	Rotation	Type	Bearings	Enclosure	Diameter (in)	Replaces
A245	1/15	208-230	3000	.95/.85	1	CW	SP	Ball	Open	3.3	7021-7490, 70-42278-02

**SKYMARK Replacement**

Item ID	HP	Volts	RPM	Amps	Speeds	Rotation	Type	Bearings	Enclosure	Diameter (in)	Replaces
A251	1/35	208-230	3000	1.10	1	CCW	SP	Sleeve	Open		MTR136PK, 7021-9136

**TAPPAN Replacement**

Item ID	HP	Volts	RPM	Amps	Speeds	Rotation	Type	Bearings	Enclosure	Diameter (in)	Replaces
A073	1/40	115/230	3000	0.7/0.35	1	CCW	SP	Ball	Open	3.3	82932, 11429-32 HQ6D1023UN 8251560133 4MH13

**TRANE Replacement**

Item ID	HP	Volts	RPM	Amps	Speeds	Rotation	Type	Bearings	Enclosure	Hertz	Overload	Replaces
66362	1/100	115	3000	1-0.35	2	CWSE	SP	Sleeve	Open	60	Automatic	7021-8925 BLW00362



Packard

TRANE Replacement

Item ID	HP	Volts	RPM	Amps	Speeds	Rotation	Type	Bearings	Hertz	Replaces
82253	1/35	208/240	3000	0.6/0.5	1	CCWSE	SP	Ball	60	21C729631P1, 7021-10286 C661452P01, 7021-7833



TRANE Replacement

Item ID	HP	Volts	RPM	Amps	Speeds	Rotation	Type	Bearings	Replaces
A265	1/125	115	3000	0.75	2	CW	SP	Ball	D342078P02, 7002-3444
A266	1/125	115	3000	1.0	2	CW	SP	Ball	D342078P04, 7002-3445
A267	1/125	115	3000	1.4	2	CW	SP	Ball	D342078P05, D342078P06, 7002-3446



TRANE Replacement

Item ID	HP	Volts	RPM	Amps	Speeds	Rotation	Type	Bearings	Replaces
A279	1/125	115	3000	0.75	2	CW	SP	Ball	D341663P04, 7002-3275 D341095P04, 7002-2531



TRANE Replacement

Item ID	HP	Volts	RPM	Amps	Speeds	Rotation	Type	Bearings	Replaces
A264	1/120	115	3000	0.75	2	CW	SP	Ball	D342078P01, D342079P01, 7002-3443



TRANE Replacement

Item ID	HP	Volts	RPM	Amps	Speeds	Rotation	Type	Bearings	Replaces
A146	1/100	115	3000	1.0-0.35	2	CW	SP	Sleeve	7021-7986, X3804276047 7021-8925, 7002-2531



TRANE Replacement

Item ID	HP	Volts	RPM	Amps	Speeds	Rotation	Type	Bearings	Replaces
A370	1/100	208-230	2920	0.18	2	CW	PSC	Ball	C664099P01, 7062-3918



TRANE Replacement

Item ID	HP	Volts	RPM	Amps	Speeds	Rotation	Type	Bearings	Replaces
A194	1/80	115	3000/1950	1.0/0.5	2	CW	SP	Sleeve	X38020420017, 7021-9561 D330900P01, 7021-9511



Packard

YORK Replacement

Item ID	HP	Volts	RPM	Amps	Rotation	Type	Enclosure	Hertz	Replaces
82702	1/50	115	3000	1.2	CCWSE	SP	Open	60	373-10337-702, 7021-8612



Packard

YORK Replacement

Item ID	HP	Volts	RPM	Amps	Speeds	Rotation	Type	Bearings	Enclosure	Replaces
82999	1/30	208-230	3200	0.65	1	CW	SP	Sleeve	Open	026-33999-001, 7021-10096 7021-9656



Packard

YORK Replacement

Item ID	HP	Volts	RPM	Amps	Speeds	Rotation	Type	Bearings	Enclosure	Hertz	Overload	Replaces
66067	1/35	115	3000	1.05	1	CCWSE	SP	Sleeve	Open	60	Automatic	326-32067-000



TRANE Replacement

Item ID	HP	Volts	RPM	Amps	Speeds	Rotation	Type	Bearings	Replaces
A197	1/70	33-110	1500/4700	1.0	VAR	CW	3 Phase	Ball	X38010571010, D342097P01, 7092-0238



TRANE Replacement

Item ID	HP	Volts	RPM	Amps	Speeds	Rotation	Type	Bearings	Replaces
A069	1/70	208-230	3000	0.5	1	CCW	SP	Sleeve	38040252, X3804025202 7021-10259, X38040252017

*Visit packardonline.com for all available OEM replacements. Must be installed by a licensed contractor only.

**TRANE Replacement**

Item ID	HP	Volts	RPM	Amps	Speeds	Rotation	Type	Bearings	Replaces
A367	1/60	115	3000	0.95	2	CW	SP	Sleeve	21D340096P02, 7021-8051, 7021-9011

**TRANE Replacement**

Item ID	HP	Volts	RPM	Amps	Speeds	Rotation	Type	Bearings	Replaces
A276	1/55	115	3000	1.0	1	CW	SP	Sleeve	D330757P01, 7021-9011

**TRANE Replacement**

Item ID	HP	Volts	RPM	Amps	Speeds	Rotation	Type	Bearings	Replaces
A278	1/50	115	3000	1.4	2	CW	SP	Ball	D341095P02, 7002-2530

**TRANE Replacement**

Item ID	HP	Volts	RPM	Amps	Speeds	Rotation	Type	Bearings	Replaces
A198	1/45	115	3000	1.75	1	CW	SP	Ball	D342077P01, 7058-0259
A199	1/45	115	3000	1.75	1	CW	SP	Ball	D342077P02, 7058-0260
A268	1/45	115	3000	1.4	2	CW	SP	Ball	D342078P06
A260	1/45	115	3250	1.0	1	CW	SP	Ball	D342077P03, 7002-3447
A261	1/45	115	3250	1.0	1	CW	SP	Ball	D342077P04, 7058-0262
A262	1/45	115	3250	1.0	1	CW	SP	Ball	D342077P05, 7058-0263
A263	1/45	115	3250	1.0	1	CW	SP	Ball	D342077P06, 7058-0264

**TRANE Replacement**

Item ID	HP	Volts	RPM	Amps	Speeds	Rotation	Type	Bearings	Hertz	Replaces
A369	1/45	208-230	2800	0.34	2	CCW	PSC	Ball	60	C663946P01, 7062-3915

**TRANE Replacement**

Item ID	HP	Volts	RPM	Amps	Speeds	Rotation	Type	Bearings	Hertz	Replaces
A361	1/42	115	3000	1.6	1	CW	SP	Ball	60	D330787P01, 7002-2558

**TRANE Replacement**

Item ID	HP	Volts	RPM	Amps	Speeds	Rotation	Type	Bearings	Hertz	Replaces
A362	1/42	115	3000	1.6	1	CW	SP	Ball	60	D341663P05, 7002-3273

**TRANE Replacement**

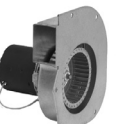
Item ID	HP	Volts	RPM	Amps	Speeds	Rotation	Type	Bearings	Hertz	Replaces
A192	1/40	115	3000	1.00	1	CCW	SP	Ball	60	7021-8569, X38040253057

**TRANE Replacement**

Item ID	HP	Volts	RPM	Amps	Speeds	Rotation	Type	Bearings	Hertz	Replaces
A075	1/40	230	3000	0.4	1	CCW	SP	Ball	60	38050005, X38050005007

**TRANE Replacement**

Item ID	HP	Volts	RPM	Amps	Speeds	Rotation	Type	Bearings	Hertz	Replaces
A269	1/35	208-230	2500/3000	0.58/0.6	1	CCW	SP	Ball	50/60	X38040363010, 7021-11054

**TRANE Replacement**

Item ID	HP	Volts	RPM	Amps	Speeds	Rotation	Type	Bearings	Hertz	Replaces
A373	1/35	208-230	3000	0.6	1	CCW	SP	Ball	60	C665662P01, 7021-9396

**TRANE Replacement**

Item ID	HP	Volts	RPM	Amps	Speeds	Rotation	Type	Bearings	Hertz	Replaces
A193	1/35	208-240	3480	0.59/0.5	1	CCW	SP	Ball	60	X38040050010, 7021-8591

MOBILE HOME COMBUSTION AIR BOOSTERS

COLEMAN REPLACEMENT 65475

NEW

- High efficiency gas furnaces
- Constructed with aluminized steel
- Product used as direct OEM replacement only
- Includes pressure tap



NORDYNE REPLACEMENT 65404

- Direct replacement for Nordyne 903404
- 7/8 in stack size
- 120 Volts
- 0.69 AMPS
- 3000 RPM



TRANE Replacement										
Item ID	HP	Volts	RPM	Amps	Speeds	Rotation	Type	Bearings	Hertz	Replaces
A360	1/25	115	2700	1.0	2	CW	SP	Ball	60	D341663P01, 7002-2532 D341095P01, 7002-3274



TRANE Replacement										
Item ID	HP	Volts	RPM	Amps	Speeds	Rotation	Type	Bearings	Hertz	Replaces
A196	1/25	115	3200	1.35	1	CW	SP	Sleeve	60	X38040313060, X38040313027 D342094P02



TRANE Replacement										
Item ID	HP	Volts	RPM	Amps	Speeds	Rotation	Type	Bearings	Hertz	Replaces
A274	1/24	208-230	3500	0.28	1	CW	PSC	Ball	50/60	X38040311-01, 7062-3973



TRANE Replacement										
Item ID	HP	Volts	RPM	Amps	Speeds	Rotation	Type	Bearings	Hertz	Replaces
A368	1/20	115	3200	0.8	2	CW	PSC	Sleeve	60	D340623P01, 7062-3782



Trane Replacement										
Item ID	HP	Volts	RPM	Amps	Speeds	Rotation	Type	Bearings	Hertz	Replaces
A130	1/20	115	3450	0.7	1	CW	PSC	Sleeve	60	X38040313037, D330757P03 D330757P035, 21D340365P03



TRANE Replacement										
Item ID	HP	Volts	RPM	Amps	Speeds	Rotation	Type	Bearings	Hertz	Replaces
A271	1/18	208-230	3500	0.62	2	CW	PSC	Ball	50/60	X38040308-01, 7062-3969



TRANE Replacement										
Item ID	HP	Volts	RPM	Amps	Speeds	Rotation	Type	Bearings	Hertz	Replaces
A191	1/15	208-230	3000	0.8	1	CCW	SP	Sleeve	60	X38040251017, 7021-6683



TRANE Replacement										
Item ID	HP	Volts	RPM	Amps	Speeds	Rotation	Type	Bearings	Hertz	Replaces
A270	1/15	208-230	3350/2800	0.42/0.5	2	CCW	PSC	Ball	50/60	X38040369010, 7062-5033



TRANE Replacement										
Item ID	HP	Volts	RPM	Amps	Speeds	Rotation	Type	Bearings	Hertz	Replaces
A272	1/12	208-230	3500	0.65	2	CW	PSC	Ball	50/60	X38040309-01, 7062-3971
A273	1/8	208-230	3500	0.62	2	CW	PSC	Ball	50/60	X38040310-01, 7062-3972



WILLIAMSON Replacement										
Item ID	HP	Volts	RPM	Amps	Speeds	Rotation	Type	Bearings	Diameter (in)	Replaces
A080	1/45	115	3000	1.1	1	CW	SP	Sleeve	3.3	D6996403, D6996404 7021-10263



WILLIAMSON Replacement										
Item ID	HP	Volts	RPM	Amps	Speeds	Rotation	Type	Bearings	Diameter (in)	Replaces
A118	1/15	115	3000	1.8	1	CW	SP	Sleeve	3.3	7021-6999, 7021-7042



YORK Replacement										
Item ID	HP	Volts	RPM	Amps	Speeds	Rotation	Type	Bearings	Enclosure	Replaces
A231	1/75	115	3000	1.3	2	CW	SP	Sleeve	Open	024-27653-000, 7021-10213 7021-10675



YORK Replacement										
Item ID	HP	Volts	RPM	Amps	Speeds	Rotation	Type	Bearings	Enclosure	Replaces
A083	1/60	230	3000	0.8	1	CCW	SP	Ball	Open	026-16323-0000, 026-20224-000 026-20224-700

**YORK Replacement**

Item ID	HP	Volts	RPM	Amps	Speeds	Rotation	Type	Bearings	Enclosure	Replaces
A063	1/56	230	3000	0.6	1	CCW	SP	Ball	Open	026-22239-000, 026-22234-700 7021-10257

**YORK Replacement**

Item ID	HP	Volts	RPM	Amps	Speeds	Rotation	Type	Bearings	Enclosure	Replaces
A144	1/40	208-230	3000	0.5	1	CW	SP	Sleeve	Open	7021-6770, 024-24115-014

**YORK Replacement**

Item ID	HP	Volts	RPM	Amps	Speeds	Rotation	Type	Bearings	Enclosure	Replaces
A221	1/40	208-230	3000	0.55	1	CCW	SP	Sleeve	Open	026-30614-700, 026-31221-700 026-32067-700

**YORK Replacement**

Item ID	HP	Volts	RPM	Amps	Speeds	Rotation	Type	Bearings	Enclosure	Replaces
A222	1/35	115	3000	1.05	1	CCW	SP	Ball	Open	026-32067-000, 026-32067-700 7021-7481

**YORK Replacement**

Item ID	HP	Volts	RPM	Amps	Speeds	Rotation	Type	Bearings	Enclosure	Replaces
A226	1/35	115	3000	1.7	1	CW	SP	Ball		024-34490-000, 7058-0266

**YORK Replacement**

Item ID	HP	Volts	RPM	Amps	Speeds	Rotation	Type	Bearings	Enclosure	Replaces
A154	1/30	115	3000	1.2	1	CW	SP	Sleeve	Open	024-27519-000, 7021-10300 7021-9428

**YORK Replacement**

Item ID	HP	Volts	RPM	Amps	Speeds	Rotation	Type	Bearings	Enclosure	Replaces
A229	1/25	115	3000	1.75	1	CW	SP	Ball		38050005, X38050005007

**YORK Replacement**

Item ID	HP	Volts	RPM	Amps	Speeds	Rotation	Type	Bearings	Enclosure	Replaces
A228	1/25	115	3000	2.0	1	CW	SP	Ball		D341663P05, 7002-3273

**YORK Replacement**

Item ID	HP	Volts	RPM	Amps	Speeds	Rotation	Type	Bearings	Enclosure	Replaces
A227	1/25	115	3450	0.7	1	CW	PSC	Sleeve	Open	024-27641-000, 373-20717-001

**YORK Replacement**

Item ID	HP	Volts	RPM	Amps	Speeds	Rotation	Type	Bearings	Enclosure	Replaces
A220	1/20	115	3000	1.6	1	CW	SP	Ball	Open	026-30887-700, 026-27510-700 026-27510-000, 026-30887-000 7021-7217, 7021-5838

**YORK Replacement**

Item ID	HP	Volts	RPM	Amps	Speeds	Rotation	Type	Bearings	Enclosure	Replaces
A168	1/20	115	3450	0.7	1	CW	PSC	Ball	Open	20000101, 7062-1881, 7062-3136

**YORK Replacement**

Item ID	HP	Volts	RPM	Amps	Speeds	Rotation	Type	Bearings	Enclosure	Replaces
A230	1/20	115	3450	0.8	2	CW	PSC	Sleeve	Open	024-31953-000, 7021-5094



YORK Replacement											
Item ID	HP	Volts	RPM	Amps	Speeds	Rotation	Type	Bearings	Enclosure	Replaces	
A224	1/18	115	3450	0.8	2	CW	SP	Sleeve	Open	024-27654-000, 7062-4743 7062-5048	



YORK Replacement											
Item ID	HP	Volts	RPM	Amps	Speeds	Rotation	Type	Bearings	Enclosure	Replaces	
A234	1/12	208-230	3200	0.5	1	CW	PSC	Ball	Open	026-39532-000, 7062-5155 7062-5267	

FASCO OEM Direct Replacements for Water Heaters



AMERICAN WATER HEATER Replacement											
Item ID	HP	Volts	RPM	Amps	Speeds	Rotation	Type	Bearings	Enclosure	Replaces	
W1	1/25	115	3210	1.90	1	CW	SP	Sleeve	OFC	3000288	



AO SMITH Replacement											
Item ID	HP	Volts	RPM	Amps	Speeds	Rotation	Type	Bearings	Enclosure	Replaces	
W2	1/14	115	3275	2.30	1	CW	SP	Ball	Open	183505-000, 7021-10770	



AO SMITH Replacement											
Item ID	HP	Volts	RPM	Amps	Speeds	Rotation	Type	Bearings	Enclosure	Replaces	
W4	1/20	115	3400	1.80	1	CCW	SP	Sleeve	Open	183381-000, 7021-10195 7021-10910	



BRADFORD WHITE Replacement											
Item ID	HP	Volts	RPM	Amps	Speeds	Rotation	Type	Bearings	Enclosure		Replaces
W3	1/17	115	3000	1.80	1	CCW	SP	Sleeve			117524-00, 239-39785-00



BRADFORD WHITE Replacement											
Item ID	HP	Volts	RPM	Amps	Speeds	Rotation	Type	Bearings	Enclosure	Replaces	
W5	1/14	115	3275	2.50	1	CW	SP	Ball	Open	239-42133-00B, 7021-10712	



BRADFORD WHITE Replacement											
Item ID	HP	Volts	RPM	Amps	Speeds	Rotation	Type	Bearings	Enclosure	Replaces	
W6	1/15	115	3000	2.20	1	CCW	SP	Sleeve	Open	239-40614-00C, 7021-9764	



BRADFORD WHITE Replacement											
Item ID	HP	Volts	RPM	Amps	Speeds	Rotation	Type	Bearings	Enclosure		Replaces
W11	1/12	120	3000	3.1	1	CW	SP	Ball			B265-45584-00



GSW Replacement											
Item ID	HP	Volts	RPM	Amps	Speeds	Rotation	Type	Bearings	Enclosure	Replaces	
W7	1/25	115	3200	1.30	1	CW	SP	Sleeve	OFC	63217	



GSW Replacement											
Item ID	HP	Volts	RPM	Amps	Speeds	Rotation	Type	Bearings	Enclosure	Replaces	
W8	1/25	115	3200	1.30	1	CW	SP	Sleeve	OFC	63172	



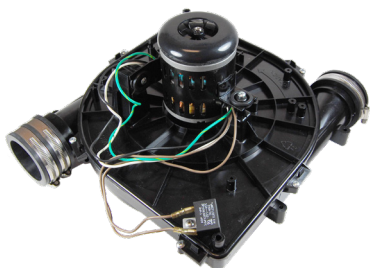
STATE IND. Replacement											
Item ID	HP	Volts	RPM	Amps	Speeds	Rotation	Type	Bearings	Enclosure	Replaces	
W9	1/60	115	3000	0.95	1	CW	SP	Sleeve	OFC	0012400500	



STATE IND. Replacement											
Item ID	HP	Volts	RPM	Amps	Speeds	Rotation	Type	Bearings	Enclosure	Replaces	
W10	1/20	115	3400	1.80	1	CW	SP	Sleeve	OFC	0012400540	

PACKARD SATISFACTION

The Packard brand of draft inducers are direct replacements for all major OEM brands. We have worked closely with our manufacturers to develop draft inducers that are safe, reliable and cost effective drop-in replacements.



Draft Inducers



**Capacitors
and Contactors**

CORE PR

Visit packardonline.com
full line of replac

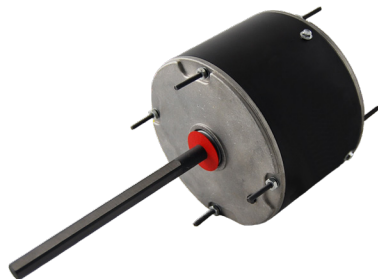
*Proud to be the first master distributor in
the HVACR industry
to adopt an
Employee Stock
Ownership Plan!*

**PACKARD IS NOW
100% EMPLOYEE
OWNED!**



PRODUCTS

line.com for our
cement products!



Motors



Compressors

Packard

3 locations nationwide!

Corporate Headquarters and Distribution Center

2700 Barrett Lakes Blvd. NW
Suite 100
Kennesaw, GA 30144

Additional Distribution Centers

Midwest DC

2570 N. Shadeland Ave
Suite 103
Indianapolis, IN 46219

West Coast DC

6151 W. Erie St.
Chandler, AZ 85226

To support our customers, we maintain three distribution centers in Kennesaw, Georgia, Indianapolis, Indiana and Chandler, Arizona. Our distribution centers help you get your orders quickly - some as soon as the next day! Plus they have convenient pick up areas for local customers. We pride ourselves on our ability to provide our customers with a 99% fulfillment rate, neatly packed skids, easy-to-read packing slips, online order and shipment tracking.



- Strategic Sales Office
- ★ Distribution Center

With more locations, we continue to increase our stock availability creating even better fulfillment for your HVACR needs.

ABOUT PACKARD, INC.

We have been a dominant force in the HVACR industry for over 50 years. As a master distributor, we bring wholesalers innovative, high quality products that include top industry names and our own exclusive private-label lines. Although we have regional offices and independent manufacturers' representatives covering us from coast to coast, we have chosen Kennesaw, Georgia as the home for both our corporate office and our main distribution center. Our customers in the Midwest are served through a state-of-the art distribution center located in Indianapolis, Indiana. Packard takes pride in being a customer focused-employee owned company and service, selection and satisfaction will always be top priority.



@packardonline



Packard Inc.



packardonline.com/youtube

PACKARDONLINE.COM | 800.334.1769